



Contract Holder

INTERIOR FUSION A CERTIFIED SERVICE-DISABLED VETERAN-OWNED SMALL BUSINESS



Table Of Contents

Patient Room Furniture	
Bedside Cabinet	3
Dresser	6
Wardrobe Tower	7
Overbed Table	9
Patient Room Seating	
High Back Patient Chair	10
Patient Recliner	12
Trendelenburg Recliner	16
Glider	22
Single Seat Sleeper	23
Two Seat Sleeper	25
Three Seat Sleeper	27
Exam Stool	28
Waiting Room Seating	
Single Seat Arm Chair	29
Two Seat Chair	31
Three Seat Chair	33
Bariatric Arm Chair	35
Hip Chair	37
Waiting Room Table	
Free Standing End Table	39
Attached End Table	40
Attached Connecting Table	41
Coffee Table	42
Expanded Seating Color Options	43
Expanded Finish Options	45
Pricing	46
Order Information	51



PATIENT ROOM FURNITURE

Bedside Cabinet



7105-01-682-9725

Three Drawer Bedside Cabinet with Gallery Rail - Light Maple Wood Finish - 19.75"W x 19.75"D x 30"H - Tops and fronts of patient room bedside cabinets are made of Thermoformed Vinyl, the body material is Laminate, and are locking. They feature four dual wheel casters with at least two lockable casters, removable and field replaceable drawers and doors, full extension glides with bumpers to soften the sound of closing, and venting. All drawers also include liners. Coordinating dressers and wardrobe towers are also available.



7105-01-682-9728

Three Drawer Bedside Cabinet with Gallery Rail - Platinum Gray Finish - 19.75"W x 19.75"D x 30"H - Tops and fronts of patient room bedside cabinets are made of Thermoformed Vinyl, the body material is Laminate, and are locking. They feature four dual wheel casters with at least two lockable casters, removable and field replaceable drawers and doors, full extension glides with bumpers to soften the sound of closing, and venting. All drawers also include liners. Coordinating dressers and wardrobe towers are also available.



7105-01-652-8445

Three Drawer Bedside Cabinet with Spill Groove - Light Maple Wood Finish - 19.75"W x 19.75"D x 30"H - Tops and fronts of patient room bedside cabinets are made of Thermoformed Vinyl, the body material is Laminate, and are locking. They feature four dual wheel casters with at least two lockable casters, removable and field replaceable drawers and doors, full extension glides with bumpers to soften the sound of closing, and venting. All drawers also include liners. Coordinating dressers and wardrobe towers are also available.



7105-01-682-9729

Three Drawer Bedside Cabinet with Spill Groove - Platinum Gray Finish - 19.75"W x 19.75"D x 30"H - Tops and fronts of patient room bedside cabinets are made of Thermoformed Vinyl, the body material is Laminate, and are locking. They feature four dual wheel casters with at least two lockable casters, removable and field replaceable drawers and doors, full extension glides with bumpers to soften the sound of closing, and venting. All drawers also include liners. Coordinating dressers and wardrobe towers are also available.

Don't see the finish you need? See our expanded finish options on page 45. If selecting from the expanded options page, email furniture@gsa.gov to complete your order.



PATIENT ROOM FURNITURE

Bedside Cabinet



7105-01-682-9730

Single Drawer Bedside Cabinet with Left Door and Gallery Rail - Light Maple Wood Finish - 19.75"W x 19.75"D x 30"H - Tops and fronts of patient room bedside cabinets are made of Thermoformed Vinyl, the body material is Laminate, and are locking. They feature four dual wheel casters with at least two lockable casters, removable and field replaceable drawers and doors, full extension glides with bumpers to soften the sound of closing, and venting. All drawers also include liners. Coordinating dressers and wardrobe towers are also available.



7105-01-682-9731

Single Drawer Bedside Cabinet with Left Door and Gallery Rail - Platinum Gray Finish - 19.75"W x 19.75"D x 30"H - Tops and fronts of patient room bedside cabinets are made of Thermoformed Vinyl, the body material is Laminate, and are locking. They feature four dual wheel casters with at least two lockable casters, removable and field replaceable drawers and doors, full extension glides with bumpers to soften the sound of closing, and venting. All drawers also include liners. Coordinating dressers and wardrobe towers are also available.



7105-01-683-0163

Single Drawer Bedside Cabinet with Left Door and Spill Groove - Light Maple Wood Finish - 19.75"W x 19.75"D x 30"H - Tops and fronts of patient room bedside cabinets are made of Thermoformed Vinyl, the body material is Laminate, and are locking. They feature four dual wheel casters with at least two lockable casters, removable and field replaceable drawers and doors, full extension glides with bumpers to soften the sound of closing, and venting. All drawers also include liners. Coordinating dressers and wardrobe towers are also available.



7105-01-683-0154

Single Drawer Bedside Cabinet with Left Door and Spill Groove - Platinum Gray Finish - 19.75"W x 19.75"D x 30"H - Tops and fronts of patient room bedside cabinets are made of Thermoformed Vinyl, the body material is Laminate, and are locking. They feature four dual wheel casters with at least two lockable casters, removable and field replaceable drawers and doors, full extension glides with bumpers to soften the sound of closing, and venting. All drawers also include liners. Coordinating dressers and wardrobe towers are also available.

Don't see the finish you need? See our expanded finish options on page 45. If selecting from the expanded options page, email furniture@gsa.gov to complete your order.



PATIENT ROOM FURNITURE

Bedside Cabinet



7105-01-683-0156

Single Drawer Bedside Cabinet with Right Door and Gallery Rail - Light Maple Wood Finish - 19.75"W x 19.75"D x 30"H - Tops and fronts of patient room bedside cabinets are made of Thermoformed Vinyl, the body material is Laminate, and are locking. They feature four dual wheel casters with at least two lockable casters, removable and field replaceable drawers and doors, full extension glides with bumpers to soften the sound of closing, and venting. All drawers also include liners. Coordinating dressers and wardrobe towers are also available.



7105-01-683-0157

Single Drawer Bedside Cabinet with Right Door and Gallery Rail - Platinum Gray Finish - 19.75"W x 19.75"D x 30"H - Tops and fronts of patient room bedside cabinets are made of Thermoformed Vinyl, the body material is Laminate, and are locking. They feature four dual wheel casters with at least two lockable casters, removable and field replaceable drawers and doors, full extension glides with bumpers to soften the sound of closing, and venting. All drawers also include liners. Coordinating dressers and wardrobe towers are also available.



7105-01-683-0159

Single Drawer Bedside Cabinet with Right Door and Spill Groove - Light Maple Wood Finish - 19.75"W x 19.75"D x 30"H - Tops and fronts of patient room bedside cabinets are made of Thermoformed Vinyl, the body material is Laminate, and are locking. They feature four dual wheel casters with at least two lockable casters, removable and field replaceable drawers and doors, full extension glides with bumpers to soften the sound of closing, and venting. All drawers also include liners. Coordinating dressers and wardrobe towers are also available.



7105-01-683-0160

Single Drawer Bedside Cabinet with Right Door and Spill Groove - Platinum Gray Finish - 19.75"W x 19.75"D x 30"H - Tops and fronts of patient room bedside cabinets are made of Thermoformed Vinyl, the body material is Laminate, and are locking. They feature four dual wheel casters with at least two lockable casters, removable and field replaceable drawers and doors, full extension glides with bumpers to soften the sound of closing, and venting. All drawers also include liners. Coordinating dressers and wardrobe towers are also available.

Don't see the finish you need? See our expanded finish options on page 45. If selecting from the expanded options page, email furniture@gsa.gov to complete your order.



PATIENT ROOM FURNITURE

Dresser



7105-01-683-0855

Three Drawer Dresser - Light Maple Wood Finish - 31.75"W x 19.75"D x 30"H - Tops and fronts of patient room dressers are made of Thermoformed Vinyl, the body material is Laminate, and are locking. They feature metal legs with leveling glides, removable and field replaceable drawers, full extension glides with bumpers to soften the sound of closing, and venting. All drawers also include liners. Coordinating bedside cabinets and wardrobe towers are also available.



7105-01-683-0856

Three Drawer Dresser - Platinum Gray Finish - 31.75"W x 19.75"D x 30"H - Tops and fronts of patient room dressers are made of Thermoformed Vinyl, the body material is Laminate, and are locking. They feature metal legs with leveling glides, removable and field replaceable drawers, full extension glides with bumpers to soften the sound of closing, and venting. All drawers also include liners. Coordinating bedside cabinets and wardrobe towers are also available.

Don't see the finish you need? See our expanded finish options on page 45. If selecting from the expanded options page, email furniture@gsa.gov to complete your order.



PATIENT ROOM FURNITURE

Wardrobe Tower



7105-01-683-0860

Right Door Wardrobe - Light Maple Wood Finish - 23.25"W x 19.75"D x 70"H - Fronts of Patient Room wardrobe towers are made of Thermoformed Vinyl. The top and body material is Laminate, they are available in one and two door options, and are locking. They feature metal legs with leveling glides, one fixed top shelf with closet rod, removable and field replaceable doors, bumpers on doors to soften the sound of closing, and venting. Coordinating bedside cabinets and dressers are also available.



7105-01-683-1403

Right Door Wardrobe - Platinum Gray Finish - 23.25"W x 19.75"D x 70"H - Fronts of Patient Room wardrobe towers are made of Thermoformed Vinyl. The top and body material is Laminate, they are available in one and two door options, and are locking. They feature metal legs with leveling glides, one fixed top shelf with closet rod, removable and field replaceable doors, bumpers on doors to soften the sound of closing, and venting. Coordinating bedside cabinets and dressers are also available.



7105-01-683-1405

Left Door Wardrobe - Light Maple Wood Finish - 23.25"W x 19.75"D x 70"H - Fronts of Patient Room wardrobe towers are made of Thermoformed Vinyl. The top and body material is Laminate, they are available in one and two door options, and are locking. They feature metal legs with leveling glides, one fixed top shelf with closet rod, removable and field replaceable doors, bumpers on doors to soften the sound of closing, and venting. Coordinating bedside cabinets and dressers are also available.



7105-01-683-0863

Left Door Wardrobe - Platinum Gray Finish - 23.25"W x 19.75"D x 70"H - Fronts of Patient Room wardrobe towers are made of Thermoformed Vinyl. The top and body material is Laminate, they are available in one and two door options, and are locking. They feature metal legs with leveling glides, one fixed top shelf with closet rod, removable and field replaceable doors, bumpers on doors to soften the sound of closing, and venting. Coordinating bedside cabinets and dressers are also available.

Don't see the finish you need? See our expanded finish options on page 45. If selecting from the expanded options page, email furniture@gsa.gov to complete your order.



PATIENT ROOM FURNITURE

Wardrobe Tower



7105-01-683-0868

Double Door Wardrobe - Light Maple Wood Finish - 35.25"W x 23.25"D x 70"H - Fronts of Patient Room wardrobe towers are made of Thermoformed Vinyl. The top and body material is Laminate, they are available in one and two door options, and are locking. They feature metal legs with leveling glides, one fixed top shelf with closet rod, removable and field replaceable doors, bumpers on doors to soften the sound of closing, and venting. Coordinating bedside cabinets and dressers are also available.



7105-01-683-1406

Double Door Wardrobe - Platinum Gray Finish - 35.25"W x 23.25"D x 70"H - Fronts of Patient Room wardrobe towers are made of Thermoformed Vinyl. The top and body material is Laminate, they are available in one and two door options, and are locking. They feature metal legs with leveling glides, one fixed top shelf with closet rod, removable and field replaceable doors, bumpers on doors to soften the sound of closing, and venting. Coordinating bedside cabinets and dressers are also available.

Don't see the finish you need? See our expanded finish options on page 45. If selecting from the expanded options page, email furniture@gsa.gov to complete your order.



PATIENT ROOM FURNITURE

Overbed Table



7105-01-652-8444

Overbed Table with Rectangular Shaped Top - Light Maple Wood Finish - 30"W x 16"D x 27-43"H - Overbed tables contain a solid surface top constructed of thermoformed vinyl with raised edge to contain spills. Tables feature offset metal column base with casters and pneumatic height adjustment range of at least 11" high to 30" - 41". The Maximum weight capacity is 100 lbs.



7105-01-683-0149

Overbed Table with Rectangular Shaped Top - Platinum Gray Finish - 30"W x 16"D x 27-43"H - Overbed tables contain a solid surface top constructed of thermoformed vinyl with raised edge to contain spills. Tables feature offset metal column base with casters and pneumatic height adjustment range of at least 11" high to 30" - 41". The Maximum weight capacity is 100 lbs.



7105-01-683-0151

Overbed Table with Kidney Shaped Top - Light Maple Wood Finish - 30"W x 16"D x 27-43"H - Overbed tables contain a solid surface top constructed of thermoformed vinyl with raised edge to contain spills. Tables feature offset metal column base with casters and pneumatic height adjustment range of at least 11" high to 30" - 41". The Maximum weight capacity is 100 lbs.



7105-01-683-0152

Overbed Table with Kidney Shaped Top - Platinum Gray Finish - 30"W x 16"D x 27-43"H - Overbed tables contain a solid surface top constructed of thermoformed vinyl with raised edge to contain spills. Tables feature offset metal column base with casters and pneumatic height adjustment range of at least 11" high to 30" - 41". The Maximum weight capacity is 100 lbs.

Don't see the finish you need? See our expanded finish options on page 45. If selecting from the expanded options page, email furniture@gsa.gov to complete your order.



PATIENT ROOM SEATING

High Back Patient Chair



7105-01-683-1762

Beech Wood Chair Frame - Clear Beech, Blue Fabric - 25"W x 27"D x 43.5"H - High back patient chairs with wall saver design have open arms with black urethane arm caps. Chairs feature a cleanout space between the back and seat cushion, removable upholstery covers, removable and field replaceable cushions and a moisture barrier. Chair frames have an anti-microbial finish and glides. The chairs coordinate with other patient room seating within this line including recliners, gliders and sleepers.



7105-01-683-1764

Beech Wood Chair Frame - Clear Beech, Mocha Fabric - 25"W x 27"D x 43.5"H - High back patient chairs with wall saver design have open arms with black urethane arm caps. Chairs feature a cleanout space between the back and seat cushion, removable upholstery covers, removable and field replaceable cushions and a moisture barrier. Chair frames have an anti-microbial finish and glides. The chairs coordinate with other patient room seating within this line including recliners, gliders and sleepers.



7105-01-683-1765

Beech Wood Chair Frame - Clear Beech, Blue Vinyl - 25"W x 27"D x 43.5"H - High back patient chairs with wall saver design have open arms with black urethane arm caps. Chairs feature a cleanout space between the back and seat cushion, removable upholstery covers, removable and field replaceable cushions and a moisture barrier. Chair frames have an anti-microbial finish and glides. The chairs coordinate with other patient room seating within this line including recliners, gliders and sleepers.



7105-01-683-1768

Beech Wood Chair Frame - Clear Beech, Mocha Vinyl - 25"W x 27"D x 43.5"H - High back patient chairs with wall saver design have open arms with black urethane arm caps. Chairs feature a cleanout space between the back and seat cushion, removable upholstery covers, removable and field replaceable cushions and a moisture barrier. Chair frames have an anti-microbial finish and glides. The chairs coordinate with other patient room seating within this line including recliners, gliders and sleepers.

Don't see the finish you need? See our expanded finish options on page 45. If selecting from the expanded options page, email furniture@gsa.gov to complete your order.



PATIENT ROOM SEATING

High Back Patient Chair



7105-01-683-1769

Silver Metallic Finish Chair Frame - Blue Fabric - 25"W x 28"D x 43.75"H - High back patient chairs with wall saver design have open arms with black urethane arm caps. Chairs feature a cleanout space between the back and seat cushion, removable upholstery covers, removable and field replaceable cushions and a moisture barrier. Chair frames have an anti-microbial finish and glides. The chairs coordinate with other patient room seating within this line including recliners, gliders and sleepers.



7105-01-683-1771

Silver Metallic Finish Chair Frame - Mocha Fabric - 25"W x 28"D x 43.75"H - High back patient chairs with wall saver design have open arms with black urethane arm caps. Chairs feature a cleanout space between the back and seat cushion, removable upholstery covers, removable and field replaceable cushions and a moisture barrier. Chair frames have an anti-microbial finish and glides. The chairs coordinate with other patient room seating within this line including recliners, gliders and sleepers.



7105-01-683-1773

Silver Metallic Finish Chair Frame - Blue Vinyl - 25"W x 28"D x 43.75"H - High back patient chairs with wall saver design have open arms with black urethane arm caps. Chairs feature a cleanout space between the back and seat cushion, removable upholstery covers, removable and field replaceable cushions and a moisture barrier. Chair frames have an anti-microbial finish and glides. The chairs coordinate with other patient room seating within this line including recliners, gliders and sleepers.



7105-01-683-1789

Silver Metallic Finish Chair Frame - Mocha Vinyl - 25"W x 28"D x 43.75"H - High back patient chairs with wall saver design have open arms with black urethane arm caps. Chairs feature a cleanout space between the back and seat cushion, removable upholstery covers, removable and field replaceable cushions and a moisture barrier. Chair frames have an anti-microbial finish and glides. The chairs coordinate with other patient room seating within this line including recliners, gliders and sleepers.

Don't see the finish you need? See our expanded finish options on page 45. If selecting from the expanded options page, email furniture@gsa.gov to complete your order.



PATIENT ROOM SEATING

Patient Recliner



7105-01-683-2155

Stationary Patient Recliner with Right Flip Down Arm - Blue Fabric - 29.5"W x 35"D x 45.5"H - Patient recliners are available as stationary or mobile with right flip down arm or left flip down arm options. Stationary recliners have glides. Mobile recliners have a central locking caster system and pushbar. All recliners feature black urethane arm caps, footrest/leg support, recliner control, removable upholstery covers, removable and field replaceable cushions, moisture barrier within the seat cushion, and a cleanout space between the back and the seat cushion. All recliners also come with an IV pole and holder and drainage bag/utility holder especially for healthcare environments. Maximum weight capacity is 300 lbs.



7105-01-683-2392

Stationary Patient Recliner with Right Flip Down Arm - Mocha Fabric - 29.5"W x 35"D x 45.5"H - Patient recliners are available as stationary or mobile with right flip down arm or left flip down arm options. Stationary recliners have glides. Mobile recliners have a central locking caster system and pushbar. All recliners feature black urethane arm caps, footrest/leg support, recliner control, removable upholstery covers, removable and field replaceable cushions, moisture barrier within the seat cushion, and a cleanout space between the back and the seat cushion. All recliners also come with an IV pole and holder and drainage bag/utility holder especially for healthcare environments. Maximum weight capacity is 300 lbs.



7105-01-683-2393

Stationary Patient Recliner with Right Flip Down Arm - Blue Vinyl - 29.5"W x 35"D x 45.5"H - Patient recliners are available as stationary or mobile with right flip down arm or left flip down arm options. Stationary recliners have glides. Mobile recliners have a central locking caster system and pushbar. All recliners feature black urethane arm caps, footrest/leg support, recliner control, removable upholstery covers, removable and field replaceable cushions, moisture barrier within the seat cushion, and a cleanout space between the back and the seat cushion. All recliners also come with an IV pole and holder and drainage bag/utility holder especially for healthcare environments. Maximum weight capacity is 300 lbs.



7105-01-683-2395

Stationary Patient Recliner with Right Flip Down Arm - Mocha Vinyl - 29.5"W x 35"D x 45.5"H - Patient recliners are available as stationary or mobile with right flip down arm or left flip down arm options. Stationary recliners have glides. Mobile recliners have a central locking caster system and pushbar. All recliners feature black urethane arm caps, footrest/leg support, recliner control, removable upholstery covers, removable and field replaceable cushions, moisture barrier within the seat cushion, and a cleanout space between the back and the seat cushion. All recliners also come with an IV pole and holder and drainage bag/utility holder especially for healthcare environments. Maximum weight capacity is 300 lbs.

Don't see the finish you need? See our expanded finish options on page 45. If selecting from the expanded options page, email furniture@gsa.gov to complete your order.



PATIENT ROOM SEATING

Patient Recliner



7105-01-683-2397

Stationary Patient Recliner with Left Flip Down Arm - Blue Fabric - 29.5"W x 35"D x 45.5"H - Patient recliners are available as stationary or mobile with right flip down arm or left flip down arm options. Stationary recliners have glides. Mobile recliners have a central locking caster system and pushbar. All recliners feature black urethane arm caps, footrest/leg support, recliner control, removable upholstery covers, removable and field replaceable cushions, moisture barrier within the seat cushion, and a cleanout space between the back and the seat cushion. All recliners also come with an IV pole and holder and drainage bag/utility holder especially for healthcare environments. Maximum weight capacity is 300 lbs.



7105-01-683-2398

Stationary Patient Recliner with Left Flip Down Arm - Mocha Fabric - 29.5"W x 35"D x 45.5"H - Patient recliners are available as stationary or mobile with right flip down arm or left flip down arm options. Stationary recliners have glides. Mobile recliners have a central locking caster system and pushbar. All recliners feature black urethane arm caps, footrest/leg support, recliner control, removable upholstery covers, removable and field replaceable cushions, moisture barrier within the seat cushion, and a cleanout space between the back and the seat cushion. All recliners also come with an IV pole and holder and drainage bag/utility holder especially for healthcare environments. Maximum weight capacity is 300 lbs.



7105-01-683-2399

Stationary Patient Recliner with Left Flip Down Arm - Blue Vinyl - 29.5"W x 35"D x 45.5"H - Patient recliners are available as stationary or mobile with right flip down arm or left flip down arm options. Stationary recliners have glides. Mobile recliners have a central locking caster system and pushbar. All recliners feature black urethane arm caps, footrest/leg support, recliner control, removable upholstery covers, removable and field replaceable cushions, moisture barrier within the seat cushion, and a cleanout space between the back and the seat cushion. All recliners also come with an IV pole and holder and drainage bag/utility holder especially for healthcare environments. Maximum weight capacity is 300 lbs.



7105-01-683-2401

Stationary Patient Recliner with Left Flip Down Arm - Mocha Vinyl - 29.5"W x 35"D x 45.5"H - Patient recliners are available as stationary or mobile with right flip down arm or left flip down arm options. Stationary recliners have glides. Mobile recliners have a central locking caster system and pushbar. All recliners feature black urethane arm caps, footrest/leg support, recliner control, removable upholstery covers, removable and field replaceable cushions, moisture barrier within the seat cushion, and a cleanout space between the back and the seat cushion. All recliners also come with an IV pole and holder and drainage bag/utility holder especially for healthcare environments. Maximum weight capacity is 300 lbs.

Don't see the finish you need? See our expanded finish options on page 45. If selecting from the expanded options page, email furniture@gsa.gov to complete your order.



PATIENT ROOM SEATING

Patient Recliner



7105-01-683-2402

Mobile Patient Recliner with Right Flip Down Arm - Blue Fabric - 29.5"W x 35"D x 45.5"H - Patient recliners are available as stationary or mobile with right flip down arm or left flip down arm options. Stationary recliners have glides. Mobile recliners have a central locking caster system and pushbar. All recliners feature black urethane arm caps, footrest/leg support, recliner control, removable upholstery covers, removable and field replaceable cushions, moisture barrier within the seat cushion, and a cleanout space between the back and the seat cushion. All recliners also come with an IV pole and holder and drainage bag/utility holder especially for healthcare environments. Maximum weight capacity is 300 lbs.



7105-01-683-2403

Mobile Patient Recliner with Right Flip Down Arm - Mocha Fabric - 29.5"W x 35"D x 45.5"H - Patient recliners are available as stationary or mobile with right flip down arm or left flip down arm options. Stationary recliners have glides. Mobile recliners have a central locking caster system and pushbar. All recliners feature black urethane arm caps, footrest/leg support, recliner control, removable upholstery covers, removable and field replaceable cushions, moisture barrier within the seat cushion, and a cleanout space between the back and the seat cushion. All recliners also come with an IV pole and holder and drainage bag/utility holder especially for healthcare environments. Maximum weight capacity is 300 lbs.



7105-01-683-2388

Mobile Patient Recliner with Right Flip Down Arm - Blue Vinyl - 29.5"W x 35"D x 45.5"H - Patient recliners are available as stationary or mobile with right flip down arm or left flip down arm options. Stationary recliners have glides. Mobile recliners have a central locking caster system and pushbar. All recliners feature black urethane arm caps, footrest/leg support, recliner control, removable upholstery covers, removable and field replaceable cushions, moisture barrier within the seat cushion, and a cleanout space between the back and the seat cushion. All recliners also come with an IV pole and holder and drainage bag/utility holder especially for healthcare environments. Maximum weight capacity is 300 lbs.



7105-01-683-2387

Mobile Patient Recliner with Right Flip Down Arm - Mocha Vinyl - 29.5"W x 35"D x 45.5"H - Patient recliners are available as stationary or mobile with right flip down arm or left flip down arm options. Stationary recliners have glides. Mobile recliners have a central locking caster system and pushbar. All recliners feature black urethane arm caps, footrest/leg support, recliner control, removable upholstery covers, removable and field replaceable cushions, moisture barrier within the seat cushion, and a cleanout space between the back and the seat cushion. All recliners also come with an IV pole and holder and drainage bag/utility holder especially for healthcare environments. Maximum weight capacity is 300 lbs.

Don't see the finish you need? See our expanded finish options on page 45. If selecting from the expanded options page, email furniture@gsa.gov to complete your order.



PATIENT ROOM SEATING

Patient Recliner



7105-01-683-2385

Mobile Patient Recliner with Left Flip Down Arm - Blue Fabric - 29.5"W x 35"D x 45.5"H - Patient recliners are available as stationary or mobile with right flip down arm or left flip down arm options. Stationary recliners have glides. Mobile recliners have a central locking caster system and pushbar. All recliners feature black urethane arm caps, footrest/leg support, recliner control, removable upholstery covers, removable and field replaceable cushions, moisture barrier within the seat cushion, and a cleanout space between the back and the seat cushion. All recliners also come with an IV pole and holder and drainage bag/utility holder especially for healthcare environments. Maximum weight capacity is 300 lbs.



7105-01-683-2384

Mobile Patient Recliner with Left Flip Down Arm - Mocha Fabric - 29.5"W x 35"D x 45.5"H - Patient recliners are available as stationary or mobile with right flip down arm or left flip down arm options. Stationary recliners have glides. Mobile recliners have a central locking caster system and pushbar. All recliners feature black urethane arm caps, footrest/leg support, recliner control, removable upholstery covers, removable and field replaceable cushions, moisture barrier within the seat cushion, and a cleanout space between the back and the seat cushion. All recliners also come with an IV pole and holder and drainage bag/utility holder especially for healthcare environments. Maximum weight capacity is 300 lbs.



7105-01-683-2389

Mobile Patient Recliner with Left Flip Down Arm - Blue Vinyl - 29.5"W x 35"D x 45.5"H - Patient recliners are available as stationary or mobile with right flip down arm or left flip down arm options. Stationary recliners have glides. Mobile recliners have a central locking caster system and pushbar. All recliners feature black urethane arm caps, footrest/leg support, recliner control, removable upholstery covers, removable and field replaceable cushions, moisture barrier within the seat cushion, and a cleanout space between the back and the seat cushion. All recliners also come with an IV pole and holder and drainage bag/utility holder especially for healthcare environments. Maximum weight capacity is 300 lbs.



7105-01-683-2390

Mobile Patient Recliner with Left Flip Down Arm - Mocha Vinyl - 29.5"W x 35"D x 45.5"H - Patient recliners are available as stationary or mobile with right flip down arm or left flip down arm options. Stationary recliners have glides. Mobile recliners have a central locking caster system and pushbar. All recliners feature black urethane arm caps, footrest/leg support, recliner control, removable upholstery covers, removable and field replaceable cushions, moisture barrier within the seat cushion, and a cleanout space between the back and the seat cushion. All recliners also come with an IV pole and holder and drainage bag/utility holder especially for healthcare environments. Maximum weight capacity is 300 lbs.

Don't see the finish you need? See our expanded finish options on page 45. If selecting from the expanded options page, email furniture@gsa.gov to complete your order.



PATIENT ROOM SEATING

Trendelenburg Recliner



7105-01-683-3018

Stationary Trendelenburg Recliner with Right Flip Down Arm - Blue Fabric - 29.5"W x 35"D x 45.5"H - Trendelenburg recliners allow individuals to recline to a position where the body is flat and feet are elevated above the head. These trendelenburg recliners are available as stationary or mobile with right flip down arm or left flip down arm options. Stationary recliners have glides. Mobile recliners have a central locking caster system and pushbar. All recliners feature black urethane arm caps, footrest/leg support, recliner control, removable upholstery covers, removable and field replaceable cushions, moisture barrier within the seat cushion, and a cleanout space between the back and the seat cushion. All recliners also come with an IV pole and holder and drainage bag/utility holder especially for healthcare environments. Maximum weight capacity is 300 lbs.



7105-01-683-3019

Stationary Trendelenburg Recliner with Right Flip Down Arm - Mocha Fabric - 29.5"W x 35"D x 45.5"H - Trendelenburg recliners allow individuals to recline to a position where the body is flat and feet are elevated above the head. These trendelenburg recliners are available as stationary or mobile with right flip down arm or left flip down arm options. Stationary recliners have glides. Mobile recliners have a central locking caster system and pushbar. All recliners feature black urethane arm caps, footrest/leg support, recliner control, removable upholstery covers, removable and field replaceable cushions, moisture barrier within the seat cushion, and a cleanout space between the back and the seat cushion. All recliners also come with an IV pole and holder and drainage bag/utility holder especially for healthcare environments. Maximum weight capacity is 300 lbs.



7105-01-683-3022

Stationary Trendelenburg Recliner with Right Flip Down Arm - Blue Vinyl - 29.5"W x 35"D x 45.5"H - Trendelenburg recliners allow individuals to recline to a position where the body is flat and feet are elevated above the head. These trendelenburg recliners are available as stationary or mobile with right flip down arm or left flip down arm options. Stationary recliners have glides. Mobile recliners have a central locking caster system and pushbar. All recliners feature black urethane arm caps, footrest/leg support, recliner control, removable upholstery covers, removable and field replaceable cushions, moisture barrier within the seat cushion, and a cleanout space between the back and the seat cushion. All recliners also come with an IV pole and holder and drainage bag/utility holder especially for healthcare environments. Maximum weight capacity is 300 lbs.

Don't see the finish you need? See our expanded finish options on page 45. If selecting from the expanded options page, email furniture@gsa.gov to complete your order.



PATIENT ROOM SEATING

Trendelenburg Recliner



7105-01-683-3025

Stationary Trendelenburg Recliner with Right Flip Down Arm - Mocha Vinyl - 29.5"W x 35"D x 45.5"H - Trendelenburg recliners allow individuals to recline to a position where the body is flat and feet are elevated above the head. These trendelenburg recliners are available as stationary or mobile with right flip down arm or left flip down arm options. Stationary recliners have glides. Mobile recliners have a central locking caster system and pushbar. All recliners feature black urethane arm caps, footrest/leg support, recliner control, removable upholstery covers, removable and field replaceable cushions, moisture barrier within the seat cushion, and a cleanout space between the back and the seat cushion. All recliners also come with an IV pole and holder and drainage bag/utility holder especially for healthcare environments. Maximum weight capacity is 300 lbs.



7105-01-683-3017

Stationary Trendelenburg Recliner with Left Flip Down Arm - Blue Fabric - 29.5"W x 35"D x 45.5"H - Trendelenburg recliners allow individuals to recline to a position where the body is flat and feet are elevated above the head. These trendelenburg recliners are available as stationary or mobile with right flip down arm or left flip down arm options. Stationary recliners have glides. Mobile recliners have a central locking caster system and pushbar. All recliners feature black urethane arm caps, footrest/leg support, recliner control, removable upholstery covers, removable and field replaceable cushions, moisture barrier within the seat cushion, and a cleanout space between the back and the seat cushion. All recliners also come with an IV pole and holder and drainage bag/utility holder especially for healthcare environments. Maximum weight capacity is 300 lbs.



7105-01-683-3021

Stationary Trendelenburg Recliner with Left Flip Down Arm - Mocha Fabric - 29.5"W x 35"D x 45.5"H - Trendelenburg recliners allow individuals to recline to a position where the body is flat and feet are elevated above the head. These trendelenburg recliners are available as stationary or mobile with right flip down arm or left flip down arm options. Stationary recliners have glides. Mobile recliners have a central locking caster system and pushbar. All recliners feature black urethane arm caps, footrest/leg support, recliner control, removable upholstery covers, removable and field replaceable cushions, moisture barrier within the seat cushion, and a cleanout space between the back and the seat cushion. All recliners also come with an IV pole and holder and drainage bag/utility holder especially for healthcare environments. Maximum weight capacity is 300 lbs.

Don't see the finish you need? See our expanded finish options on page 45. If selecting from the expanded options page, email furniture@gsa.gov to complete your order.



PATIENT ROOM SEATING

Trendelenburg Recliner



7105-01-683-0162

Stationary Trendelenburg Recliner with Left Flip Down Arm - Blue Vinyl - 29.5"W x 35"D x 45.5"H - Trendelenburg recliners allow individuals to recline to a position where the body is flat and feet are elevated above the head. These trendelenburg recliners are available as stationary or mobile with right flip down arm or left flip down arm options. Stationary recliners have glides. Mobile recliners have a central locking caster system and pushbar. All recliners feature black urethane arm caps, footrest/leg support, recliner control, removable upholstery covers, removable and field replaceable cushions, moisture barrier within the seat cushion, and a cleanout space between the back and the seat cushion. All recliners also come with an IV pole and holder and drainage bag/utility holder especially for healthcare environments. Maximum weight capacity is 300 lbs.



7105-01-683-0136

Stationary Trendelenburg Recliner with Left Flip Down Arm - Mocha Vinyl - 29.5"W x 35"D x 45.5"H - Trendelenburg recliners allow individuals to recline to a position where the body is flat and feet are elevated above the head. These trendelenburg recliners are available as stationary or mobile with right flip down arm or left flip down arm options. Stationary recliners have glides. Mobile recliners have a central locking caster system and pushbar. All recliners feature black urethane arm caps, footrest/leg support, recliner control, removable upholstery covers, removable and field replaceable cushions, moisture barrier within the seat cushion, and a cleanout space between the back and the seat cushion. All recliners also come with an IV pole and holder and drainage bag/utility holder especially for healthcare environments. Maximum weight capacity is 300 lbs.



7105-01-683-0137

Mobile Trendelenburg Recliner with Right Flip Down Arm - Blue Fabric - 29.5"W x 35"D x 45.5"H - Trendelenburg recliners allow individuals to recline to a position where the body is flat and feet are elevated above the head. These trendelenburg recliners are available as stationary or mobile with right flip down arm or left flip down arm options. Stationary recliners have glides. Mobile recliners have a central locking caster system and pushbar. All recliners feature black urethane arm caps, footrest/leg support, recliner control, removable upholstery covers, removable and field replaceable cushions, moisture barrier within the seat cushion, and a cleanout space between the back and the seat cushion. All recliners also come with an IV pole and holder and drainage bag/utility holder especially for healthcare environments. Maximum weight capacity is 300 lbs.

Don't see the finish you need? See our expanded finish options on page 45. If selecting from the expanded options page, email furniture@gsa.gov to complete your order.



PATIENT ROOM SEATING

Trendelenburg Recliner



7105-01-683-0138

Mobile Trendelenburg Recliner with Right Flip Down Arm - Mocha Fabric - 29.5"W x 35"D x 45.5"H - Trendelenburg recliners allow individuals to recline to a position where the body is flat and feet are elevated above the head. These trendelenburg recliners are available as stationary or mobile with right flip down arm or left flip down arm options. Stationary recliners have glides. Mobile recliners have a central locking caster system and pushbar. All recliners feature black urethane arm caps, footrest/leg support, recliner control, removable upholstery covers, removable and field replaceable cushions, moisture barrier within the seat cushion, and a cleanout space between the back and the seat cushion. All recliners also come with an IV pole and holder and drainage bag/utility holder especially for healthcare environments. Maximum weight capacity is 300 lbs.



7105-01-683-0139

Mobile Trendelenburg Recliner with Right Flip Down Arm - Blue Vinyl - 29.5"W x 35"D x 45.5"H - Trendelenburg recliners allow individuals to recline to a position where the body is flat and feet are elevated above the head. These trendelenburg recliners are available as stationary or mobile with right flip down arm or left flip down arm options. Stationary recliners have glides. Mobile recliners have a central locking caster system and pushbar. All recliners feature black urethane arm caps, footrest/leg support, recliner control, removable upholstery covers, removable and field replaceable cushions, moisture barrier within the seat cushion, and a cleanout space between the back and the seat cushion. All recliners also come with an IV pole and holder and drainage bag/utility holder especially for healthcare environments. Maximum weight capacity is 300 lbs.



7105-01-683-0140

Mobile Trendelenburg Recliner with Right Flip Down Arm - Mocha Vinyl - 29.5"W x 35"D x 45.5"H - Trendelenburg recliners allow individuals to recline to a position where the body is flat and feet are elevated above the head. These trendelenburg recliners are available as stationary or mobile with right flip down arm or left flip down arm options. Stationary recliners have glides. Mobile recliners have a central locking caster system and pushbar. All recliners feature black urethane arm caps, footrest/leg support, recliner control, removable upholstery covers, removable and field replaceable cushions, moisture barrier within the seat cushion, and a cleanout space between the back and the seat cushion. All recliners also come with an IV pole and holder and drainage bag/utility holder especially for healthcare environments. Maximum weight capacity is 300 lbs.

Don't see the finish you need? See our expanded finish options on page 45. If selecting from the expanded options page, email furniture@gsa.gov to complete your order.



PATIENT ROOM SEATING

Trendelenburg Recliner



7105-01-683-0142

Mobile Trendelenburg Recliner with Left Flip Down Arm - Blue Fabric - 29.5"W x 35"D x 45.5"H - Trendelenburg recliners allow individuals to recline to a position where the body is flat and feet are elevated above the head. These trendelenburg recliners are available as stationary or mobile with right flip down arm or left flip down arm options. Stationary recliners have glides. Mobile recliners have a central locking caster system and pushbar. All recliners feature black urethane arm caps, footrest/leg support, recliner control, removable upholstery covers, removable and field replaceable cushions, moisture barrier within the seat cushion, and a cleanout space between the back and the seat cushion. All recliners also come with an IV pole and holder and drainage bag/utility holder especially for healthcare environments. Maximum weight capacity is 300 lbs.



7105-01-683-0143

Mobile Trendelenburg Recliner with Left Flip Down Arm - Mocha Fabric - 29.5"W x 35"D x 45.5"H - Trendelenburg recliners allow individuals to recline to a position where the body is flat and feet are elevated above the head. These trendelenburg recliners are available as stationary or mobile with right flip down arm or left flip down arm options. Stationary recliners have glides. Mobile recliners have a central locking caster system and pushbar. All recliners feature black urethane arm caps, footrest/leg support, recliner control, removable upholstery covers, removable and field replaceable cushions, moisture barrier within the seat cushion, and a cleanout space between the back and the seat cushion. All recliners also come with an IV pole and holder and drainage bag/utility holder especially for healthcare environments. Maximum weight capacity is 300 lbs.



7105-01-683-3770

Mobile Trendelenburg Recliner with Left Flip Down Arm - Blue Vinyl - 29.5"W x 35"D x 45.5"H - Trendelenburg recliners allow individuals to recline to a position where the body is flat and feet are elevated above the head. These trendelenburg recliners are available as stationary or mobile with right flip down arm or left flip down arm options. Stationary recliners have glides. Mobile recliners have a central locking caster system and pushbar. All recliners feature black urethane arm caps, footrest/leg support, recliner control, removable upholstery covers, removable and field replaceable cushions, moisture barrier within the seat cushion, and a cleanout space between the back and the seat cushion. All recliners also come with an IV pole and holder and drainage bag/utility holder especially for healthcare environments. Maximum weight capacity is 300 lbs.

Don't see the finish you need? See our expanded finish options on page 45. If selecting from the expanded options page, email furniture@gsa.gov to complete your order.



PATIENT ROOM SEATING

Trendelenburg Recliner



7105-01-683-3023

Mobile Trendelenburg Recliner with Left Flip Down Arm - Mocha Vinyl - 29.5"W x 35"D x 45.5"H - Trendelenburg recliners allow individuals to recline to a position where the body is flat and feet are elevated above the head. These trendelenburg recliners are available as stationary or mobile with right flip down arm or left flip down arm options. Stationary recliners have glides. Mobile recliners have a central locking caster system and pushbar. All recliners feature black urethane arm caps, footrest/leg support, recliner control, removable upholstery covers, removable and field replaceable cushions, moisture barrier within the seat cushion, and a cleanout space between the back and the seat cushion. All recliners also come with an IV pole and holder and drainage bag/utility holder especially for healthcare environments. Maximum weight capacity is 300 lbs.

Don't see the finish you need? See our expanded finish options on page 45. If selecting from the expanded options page, email furniture@gsa.gov to complete your order.



PATIENT ROOM SEATING

Glider



7105-01-682-9889

Glider - Blue Fabric - 28"W x 28"D x 43.5"H - Patient gliders with closed arm design and black urethane arm caps, have a concealed gliding mechanism and a cleanout space between the back and the seat cushion. Removable and field replaceable cushions also have a moisture barrier within the seat cushion and removable fabric covers. The maximum weight capacity is 350 lbs.



7105-01-683-0145

Glider - Mocha Fabric - 28"W x 28"D x 43.5"H - Patient gliders with closed arm design and black urethane arm caps, have a concealed gliding mechanism and a cleanout space between the back and the seat cushion. Removable and field replaceable cushions also have a moisture barrier within the seat cushion and removable fabric covers. The maximum weight capacity is 350 lbs.



7105-01-683-0146

Glider - Blue Vinyl - 28"W x 28"D x 43.5"H - Patient gliders with closed arm design and black urethane arm caps, have a concealed gliding mechanism and a cleanout space between the back and the seat cushion. Removable and field replaceable cushions also have a moisture barrier within the seat cushion and removable fabric covers. The maximum weight capacity is 350 lbs.



7105-01-683-0147

Glider - Mocha Vinyl - 28"W x 28"D x 43.5"H - Patient gliders with closed arm design and black urethane arm caps, have a concealed gliding mechanism and a cleanout space between the back and the seat cushion. Removable and field replaceable cushions also have a moisture barrier within the seat cushion and removable fabric covers. The maximum weight capacity is 350 lbs.

Don't see the finish you need? See our expanded finish options on page 45. If selecting from the expanded options page, email furniture@gsa.gov to complete your order.



PATIENT ROOM SEATING

Single Seat Sleeper



7105-01-683-0871

Stationary single sleeper with glides - Blue Fabric - 35"W x 38"D x 39"H - Single seat sleeper is fully upholstered with arms and black urethane arm caps. Sleeper features a cleanout space between the back and the seat cushion and has a moisture barrier within the seat and inside back cushion. Stationary sleepers have glides. Mobile recliners have locking casters. Sleeper in a closed position is 35"W x 38"D x 39"H. Extended, the sleeping surface depth is 87" and width is 35".



7105-01-683-0875

Stationary single sleeper with glides - Mocha Fabric - 35"W x 38"D x 39"H - Single seat sleeper is fully upholstered with arms and black urethane arm caps. Sleeper features a cleanout space between the back and the seat cushion and has a moisture barrier within the seat and inside back cushion. Stationary sleepers have glides. Mobile recliners have locking casters. Sleeper in a closed position is 35"W x 38"D x 39"H. Extended, the sleeping surface depth is 87" and width is 35".



7105-01-683-0854

Stationary single sleeper with glides - Blue Vinyl - 35"W x 38"D x 39"H - Single seat sleeper is fully upholstered with arms and black urethane arm caps. Sleeper features a cleanout space between the back and the seat cushion and has a moisture barrier within the seat and inside back cushion. Stationary sleepers have glides. Mobile recliners have locking casters. Sleeper in a closed position is 35"W x 38"D x 39"H. Extended, the sleeping surface depth is 87" and width is 35".



7105-01-683-0852

Stationary single sleeper with glides - Mocha Vinyl - 35"W x 38"D x 39"H - Single seat sleeper is fully upholstered with arms and black urethane arm caps. Sleeper features a cleanout space between the back and the seat cushion and has a moisture barrier within the seat and inside back cushion. Stationary sleepers have glides. Mobile recliners have locking casters. Sleeper in a closed position is 35"W x 38"D x 39"H. Extended, the sleeping surface depth is 87" and width is 35".

Don't see the finish you need? See our expanded finish options on page 45. If selecting from the expanded options page, email furniture@gsa.gov to complete your order.



PATIENT ROOM SEATING

Single Seat Sleeper



7105-01-683-0853

Mobile single sleeper with locking casters - Blue Fabric - 35"W x 38"D x 39"H - Single seat sleeper is fully upholstered with arms and black urethane arm caps. Sleeper features a cleanout space between the back and the seat cushion and has a moisture barrier within the seat and inside back cushion. Stationary sleepers have glides. Mobile recliners have locking casters. Sleeper in a closed position is 35"W x 38"D x 39"H. Extended, the sleeping surface depth is 87" and width is 35".



7105-01-683-0857

Mobile single sleeper with locking casters - Mocha Fabric - 35"W x 38"D x 39"H - Single seat sleeper is fully upholstered with arms and black urethane arm caps. Sleeper features a cleanout space between the back and the seat cushion and has a moisture barrier within the seat and inside back cushion. Stationary sleepers have glides. Mobile recliners have locking casters. Sleeper in a closed position is 35"W x 38"D x 39"H. Extended, the sleeping surface depth is 87" and width is 35".



7105-01-683-0858

Mobile single sleeper with locking casters - Blue Vinyl - 35"W x 38"D x 39"H - Single seat sleeper is fully upholstered with arms and black urethane arm caps. Sleeper features a cleanout space between the back and the seat cushion and has a moisture barrier within the seat and inside back cushion. Stationary sleepers have glides. Mobile recliners have locking casters. Sleeper in a closed position is 35"W x 38"D x 39"H. Extended, the sleeping surface depth is 87" and width is 35".



7105-01-683-0859

Mobile single sleeper with locking casters - Mocha Vinyl - 35"W x 38"D x 39"H - Single seat sleeper is fully upholstered with arms and black urethane arm caps. Sleeper features a cleanout space between the back and the seat cushion and has a moisture barrier within the seat and inside back cushion. Stationary sleepers have glides. Mobile recliners have locking casters. Sleeper in a closed position is 35"W x 38"D x 39"H. Extended, the sleeping surface depth is 87" and width is 35".

Don't see the finish you need? See our expanded finish options on page 45. If selecting from the expanded options page, email furniture@gsa.gov to complete your order.



PATIENT ROOM SEATING

Two Seat Sleeper



7105-01-683-0460

Stationary two seat sleeper with glides - Blue Fabric - 54"W x 38"D x 39"H - Two seat sleeper is fully upholstered with arms and black urethane arm caps. Sleeper features a cleanout space between the back and the seat cushion and has a moisture barrier within the seat and inside back cushion. Stationary sleepers have glides. Mobile recliners have locking casters. Sleeper in a closed position is 54"W x 38"D x 39"H. Extended, the sleeping surface depth is 87" and width is 54".



7105-01-683-0462

Stationary two seat sleeper with glides - Mocha Fabric - 54"W x 38"D x 39"H - Two seat sleeper is fully upholstered with arms and black urethane arm caps. Sleeper features a cleanout space between the back and the seat cushion and has a moisture barrier within the seat and inside back cushion. Stationary sleepers have glides. Mobile recliners have locking casters. Sleeper in a closed position is 54"W x 38"D x 39"H. Extended, the sleeping surface depth is 87" and width is 54".



7105-01-683-0465

Stationary two seat sleeper with glides - Blue Vinyl - 54"W x 38"D x 39"H - Two seat sleeper is fully upholstered with arms and black urethane arm caps. Sleeper features a cleanout space between the back and the seat cushion and has a moisture barrier within the seat and inside back cushion. Stationary sleepers have glides. Mobile recliners have locking casters. Sleeper in a closed position is 54"W x 38"D x 39"H. Extended, the sleeping surface depth is 87" and width is 54".



7105-01-683-0466

Stationary two seat sleeper with glides - Mocha Vinyl - 54"W x 38"D x 39"H - Two seat sleeper is fully upholstered with arms and black urethane arm caps. Sleeper features a cleanout space between the back and the seat cushion and has a moisture barrier within the seat and inside back cushion. Stationary sleepers have glides. Mobile recliners have locking casters. Sleeper in a closed position is 54"W x 38"D x 39"H. Extended, the sleeping surface depth is 87" and width is 54".

Don't see the finish you need? See our expanded finish options on page 45. If selecting from the expanded options page, email furniture@gsa.gov to complete your order.



PATIENT ROOM SEATING

Two Seat Sleeper



7105-01-683-0469

Mobile two seat sleeper with locking casters - Blue Fabric - 54"W x 38"D x 39"H - Two seat sleeper is fully upholstered with arms and black urethane arm caps. Sleeper features a cleanout space between the back and the seat cushion and has a moisture barrier within the seat and inside back cushion. Stationary sleepers have glides. Mobile recliners have locking casters. Sleeper in a closed position is 54"W x 38"D x 39"H. Extended, the sleeping surface depth is 87" and width is 54".



7105-01-683-0861

Mobile two seat sleeper with locking casters - Mocha Fabric - 54"W x 38"D x 39"H - Two seat sleeper is fully upholstered with arms and black urethane arm caps. Sleeper features a cleanout space between the back and the seat cushion and has a moisture barrier within the seat and inside back cushion. Stationary sleepers have glides. Mobile recliners have locking casters. Sleeper in a closed position is 54"W x 38"D x 39"H. Extended, the sleeping surface depth is 87" and width is 54".



7105-01-683-0864

Mobile two seat sleeper with locking casters - Blue Vinyl - 54"W x 38"D x 39"H - Two seat sleeper is fully upholstered with arms and black urethane arm caps. Sleeper features a cleanout space between the back and the seat cushion and has a moisture barrier within the seat and inside back cushion. Stationary sleepers have glides. Mobile recliners have locking casters. Sleeper in a closed position is 54"W x 38"D x 39"H. Extended, the sleeping surface depth is 87" and width is 54".



7105-01-683-0867

Mobile two seat sleeper with locking casters - Mocha Vinyl - 54"W x 38"D x 39"H - Two seat sleeper is fully upholstered with arms and black urethane arm caps. Sleeper features a cleanout space between the back and the seat cushion and has a moisture barrier within the seat and inside back cushion. Stationary sleepers have glides. Mobile recliners have locking casters. Sleeper in a closed position is 54"W x 38"D x 39"H. Extended, the sleeping surface depth is 87" and width is 54".

Don't see the finish you need? See our expanded finish options on page 45. If selecting from the expanded options page, email furniture@gsa.gov to complete your order.



PATIENT ROOM SEATING

Three Seat Sleeper



7105-01-683-0879

Stationary three seat sleeper with glides - Blue Fabric - 78"W x 34.5"D x 34.5"H - Three seat sleeper is fully upholstered with arms and black urethane arm caps. Sleeper features a cleanout space between the back and the seat cushion and has a moisture barrier within the seat and inside back cushion. Stationary sleepers have glides. Mobile recliners have locking casters. Sleeper in a closed position is 78"W x 34.5"D x 34.5"H. Extended, the sleeping surface depth is 28.75" and width is 72".



7105-01-683-0878

Stationary three seat sleeper with glides - Mocha Fabric - 78"W x 34.5"D x 34.5"H - Three seat sleeper is fully upholstered with arms and black urethane arm caps. Sleeper features a cleanout space between the back and the seat cushion and has a moisture barrier within the seat and inside back cushion. Stationary sleepers have glides. Mobile recliners have locking casters. Sleeper in a closed position is 78"W x 34.5"D x 34.5"H. Extended, the sleeping surface depth is 28.75" and width is 72".



7105-01-683-0877

Stationary three seat sleeper with glides - Blue Vinyl - 78"W x 34.5"D x 34.5"H - Three seat sleeper is fully upholstered with arms and black urethane arm caps. Sleeper features a cleanout space between the back and the seat cushion and has a moisture barrier within the seat and inside back cushion. Stationary sleepers have glides. Mobile recliners have locking casters. Sleeper in a closed position is 78"W x 34.5"D x 34.5"H. Extended, the sleeping surface depth is 28.75" and width is 72".



7105-01-683-0862

Stationary three seat sleeper with glides - Mocha Vinyl - 78"W x 34.5"D x 34.5"H - Three seat sleeper is fully upholstered with arms and black urethane arm caps. Sleeper features a cleanout space between the back and the seat cushion and has a moisture barrier within the seat and inside back cushion. Stationary sleepers have glides. Mobile recliners have locking casters. Sleeper in a closed position is 78"W x 34.5"D x 34.5"H. Extended, the sleeping surface depth is 28.75" and width is 72".

Don't see the finish you need? See our expanded finish options on page 45. If selecting from the expanded options page, email furniture@gsa.gov to complete your order.



PATIENT ROOM SEATING

Three Seat Sleeper



7105-01-683-0870

Mobile three seat sleeper with locking casters - Blue Fabric - 78"W x 34.5"D x 34.5"H - Three seat sleeper is fully upholstered with arms and black urethane arm caps. Sleeper features a cleanout space between the back and the seat cushion and has a moisture barrier within the seat and inside back cushion. Stationary sleepers have glides. Mobile recliners have locking casters. Sleeper in a closed position is 78"W x 34.5"D x 34.5"H. Extended, the sleeping surface depth is 28.75" and width is 72".



7105-01-683-0872

Mobile three seat sleeper with locking casters - Mocha Fabric - 78"W x 34.5"D x 34.5"H - Three seat sleeper is fully upholstered with arms and black urethane arm caps. Sleeper features a cleanout space between the back and the seat cushion and has a moisture barrier within the seat and inside back cushion. Stationary sleepers have glides. Mobile recliners have locking casters. Sleeper in a closed position is 78"W x 34.5"D x 34.5"H. Extended, the sleeping surface depth is 28.75" and width is 72".



7105-01-683-0873

Mobile three seat sleeper with locking casters - Blue Vinyl - 78"W x 34.5"D x 34.5"H - Three seat sleeper is fully upholstered with arms and black urethane arm caps. Sleeper features a cleanout space between the back and the seat cushion and has a moisture barrier within the seat and inside back cushion. Stationary sleepers have glides. Mobile recliners have locking casters. Sleeper in a closed position is 78"W x 34.5"D x 34.5"H. Extended, the sleeping surface depth is 28.75" and width is 72".



7105-01-683-0874

Mobile three seat sleeper with locking casters - Mocha Vinyl - 78"W x 34.5"D x 34.5"H - Three seat sleeper is fully upholstered with arms and black urethane arm caps. Sleeper features a cleanout space between the back and the seat cushion and has a moisture barrier within the seat and inside back cushion. Stationary sleepers have glides. Mobile recliners have locking casters. Sleeper in a closed position is 78"W x 34.5"D x 34.5"H. Extended, the sleeping surface depth is 28.75" and width is 72".

Don't see the finish you need? See our expanded finish options on page 45. If selecting from the expanded options page, email furniture@gsa.gov to complete your order.

PATIENT ROOM SEATING

Exam Stool



7110-01-683-0851

Exam Stool - 22.3w x 22.3d x 15.1-20.3h.; Seat Width: 16.8" - Backless round revolving exam stool features a round vinyl upholstered cushion seat, moisture barrier within the seat cushion, pneumatic height adjustment, five star base and soft casters. Seat can be adjusted from 15.1' - 20.3" from floor.



NSN Healthcare Furniture
Contract #: 47QSM19A08NC Award Date: 08/23/2019

WAITING ROOM SEATING

Single Seat Arm Chair



7105-01-683-1792

Beech Wood Chair Frame - Blue Fabric, Clear Beech - 25"W x 27"D x 34.25"H - Single seat waiting room arm chairs are designed to coordinate and have the ability to be ganged with waiting room two seat chair, three seat chair, and bariatric arm chair. Ganging accessory and any hardware necessary to be connected by the end user without the use of tools is included. The chair frame features open arms with arm caps, glides, wall saver design, and an anti-microbial finish. Chair also has a removable seat cushion, cleanout space between the back and the seat cushion, and a moisture barrier within the seat cushion. Maximum weight capacity is 350 lbs.



7105-01-683-1793

Beech Wood Chair Frame - Mocha Fabric, Clear Beech - 25"W x 27"D x 34.25"H - Single seat waiting room arm chairs are designed to coordinate and have the ability to be ganged with waiting room two seat chair, three seat chair, and bariatric arm chair. Ganging accessory and any hardware necessary to be connected by the end user without the use of tools is included. The chair frame features open arms with arm caps, glides, wall saver design, and an anti-microbial finish. Chair also has a removable seat cushion, cleanout space between the back and the seat cushion, and a moisture barrier within the seat cushion. Maximum weight capacity is 350 lbs.



7105-01-683-1794

Beech Wood Chair Frame - Blue Vinyl, Clear Beech - 25"W x 27"D x 34.25"H - Single seat waiting room arm chairs are designed to coordinate and have the ability to be ganged with waiting room two seat chair, three seat chair, and bariatric arm chair. Ganging accessory and any hardware necessary to be connected by the end user without the use of tools is included. The chair frame features open arms with arm caps, glides, wall saver design, and an anti-microbial finish. Chair also has a removable seat cushion, cleanout space between the back and the seat cushion, and a moisture barrier within the seat cushion. Maximum weight capacity is 350 lbs.



7105-01-683-1795

Beech Wood Chair Frame - Mocha Vinyl, Clear Beech - 25"W x 27"D x 34.25"H - Single seat waiting room arm chairs are designed to coordinate and have the ability to be ganged with waiting room two seat chair, three seat chair, and bariatric arm chair. Ganging accessory and any hardware necessary to be connected by the end user without the use of tools is included. The chair frame features open arms with arm caps, glides, wall saver design, and an anti-microbial finish. Chair also has a removable seat cushion, cleanout space between the back and the seat cushion, and a moisture barrier within the seat cushion. Maximum weight capacity is 350 lbs.

Don't see the finish you need? See our expanded finish options on page 45. If selecting from the expanded options page, email furniture@gsa.gov to complete your order.



WAITING ROOM SEATING

Single Seat Arm Chair



7105-01-683-1796

Silver Metallic Finish Chair Frames - Blue Fabric - 25"W x 28"D x 34.5"H - Single seat waiting room arm chairs are designed to coordinate and have the ability to be ganged with waiting room two seat chair, three seat chair, and bariatric arm chair. Ganging accessory and any hardware necessary to be connected by the end user without the use of tools is included. The chair frame features open arms with arm caps, glides, wall saver design, and an anti-microbial finish. Chair also has a removable seat cushion, cleanout space between the back and the seat cushion, and a moisture barrier within the seat cushion. Maximum weight capacity is 350 lbs.



7105-01-683-1797

Silver Metallic Finish Chair Frames - Mocha Fabric - 25"W x 28"D x 34.5"H - Single seat waiting room arm chairs are designed to coordinate and have the ability to be ganged with waiting room two seat chair, three seat chair, and bariatric arm chair. Ganging accessory and any hardware necessary to be connected by the end user without the use of tools is included. The chair frame features open arms with arm caps, glides, wall saver design, and an anti-microbial finish. Chair also has a removable seat cushion, cleanout space between the back and the seat cushion, and a moisture barrier within the seat cushion. Maximum weight capacity is 350 lbs.



7105-01-683-1798

Silver Metallic Finish Chair Frames - Blue Vinyl - 25"W x 28"D x 34.5"H - Single seat waiting room arm chairs are designed to coordinate and have the ability to be ganged with waiting room two seat chair, three seat chair, and bariatric arm chair. Ganging accessory and any hardware necessary to be connected by the end user without the use of tools is included. The chair frame features open arms with arm caps, glides, wall saver design, and an anti-microbial finish. Chair also has a removable seat cushion, cleanout space between the back and the seat cushion, and a moisture barrier within the seat cushion. Maximum weight capacity is 350 lbs.



7105-01-683-1800

Silver Metallic Finish Chair Frames - Mocha Vinyl - 25"W x 28"D x 34.5"H - Single seat waiting room arm chairs are designed to coordinate and have the ability to be ganged with waiting room two seat chair, three seat chair, and bariatric arm chair. Ganging accessory and any hardware necessary to be connected by the end user without the use of tools is included. The chair frame features open arms with arm caps, glides, wall saver design, and an anti-microbial finish. Chair also has a removable seat cushion, cleanout space between the back and the seat cushion, and a moisture barrier within the seat cushion. Maximum weight capacity is 350 lbs.

Don't see the finish you need? See our expanded finish options on page 45. If selecting from the expanded options page, email furniture@gsa.gov to complete your order.



WAITING ROOM SEATING

Two Seat Chair



7105-01-683-1783

Beech Wood Chair Frame - Blue Fabric, Clear Beech - 46.5"W x 27"D x 34.25"H - Two seat waiting room arm chairs are designed to coordinate and have the ability to be ganged with waiting room single seat chair, three seat chair, and bariatric arm chair. Ganging accessory and any hardware necessary to be connected by the end user without the use of tools is included. The chair frame features open arms with black urethane arm caps, glides, wall saver design, and an anti-microbial finish. Chair also has removable seat cushions, cleanout space between the back and the seat cushion, and a moisture barrier within the seat cushion. Maximum weight capacity is 350 lbs. per seat.



7105-01-683-1784

Beech Wood Chair Frame - Mocha Fabric, Clear Beech - 46.5"W x 27"D x 34.25"H - Two seat waiting room arm chairs are designed to coordinate and have the ability to be ganged with waiting room single seat chair, three seat chair, and bariatric arm chair. Ganging accessory and any hardware necessary to be connected by the end user without the use of tools is included. The chair frame features open arms with black urethane arm caps, glides, wall saver design, and an anti-microbial finish. Chair also has removable seat cushions, cleanout space between the back and the seat cushion, and a moisture barrier within the seat cushion. Maximum weight capacity is 350 lbs. per seat.



7105-01-683-1785

Beech Wood Chair Frame - Blue Vinyl, Clear Beech - 46.5"W x 27"D x 34.25"H - Two seat waiting room arm chairs are designed to coordinate and have the ability to be ganged with waiting room single seat chair, three seat chair, and bariatric arm chair. Ganging accessory and any hardware necessary to be connected by the end user without the use of tools is included. The chair frame features open arms with black urethane arm caps, glides, wall saver design, and an anti-microbial finish. Chair also has removable seat cushions, cleanout space between the back and the seat cushion, and a moisture barrier within the seat cushion. Maximum weight capacity is 350 lbs. per seat.



7105-01-683-1786

Beech Wood Chair Frame - Mocha Vinyl, Clear Beech - 46.5"W x 27"D x 34.25"H - Two seat waiting room arm chairs are designed to coordinate and have the ability to be ganged with waiting room single seat chair, three seat chair, and bariatric arm chair. Ganging accessory and any hardware necessary to be connected by the end user without the use of tools is included. The chair frame features open arms with black urethane arm caps, glides, wall saver design, and an anti-microbial finish. Chair also has removable seat cushions, cleanout space between the back and the seat cushion, and a moisture barrier within the seat cushion. Maximum weight capacity is 350 lbs. per seat.

Don't see the finish you need? See our expanded finish options on page 45. If selecting from the expanded options page, email furniture@gsa.gov to complete your order.



WAITING ROOM SEATING

Two Seat Chair



7105-01-683-1787

Silver Metallic Finish Chair Frames - Blue Fabric - 46.5"W x 28"D x 34.5"H - Two seat waiting room arm chairs are designed to coordinate and have the ability to be ganged with waiting room single seat chair, three seat chair, and bariatric arm chair. Ganging accessory and any hardware necessary to be connected by the end user without the use of tools is included. The chair frame features open arms with black urethane arm caps, glides, wall saver design, and an anti-microbial finish. Chair also has removable seat cushions, cleanout space between the back and the seat cushion, and a moisture barrier within the seat cushion. Maximum weight capacity is 350 lbs. per seat.



7105-01-683-1788

Silver Metallic Finish Chair Frames - Mocha Fabric - 46.5"W x 28"D x 34.5"H - Two seat waiting room arm chairs are designed to coordinate and have the ability to be ganged with waiting room single seat chair, three seat chair, and bariatric arm chair. Ganging accessory and any hardware necessary to be connected by the end user without the use of tools is included. The chair frame features open arms with black urethane arm caps, glides, wall saver design, and an anti-microbial finish. Chair also has removable seat cushions, cleanout space between the back and the seat cushion, and a moisture barrier within the seat cushion. Maximum weight capacity is 350 lbs. per seat.



7105-01-683-1790

Silver Metallic Finish Chair Frames - Blue Vinyl - 46.5"W x 28"D x 34.5"H - Two seat waiting room arm chairs are designed to coordinate and have the ability to be ganged with waiting room single seat chair, three seat chair, and bariatric arm chair. Ganging accessory and any hardware necessary to be connected by the end user without the use of tools is included. The chair frame features open arms with black urethane arm caps, glides, wall saver design, and an anti-microbial finish. Chair also has removable seat cushions, cleanout space between the back and the seat cushion, and a moisture barrier within the seat cushion. Maximum weight capacity is 350 lbs. per seat.



7105-01-683-1791

Silver Metallic Finish Chair Frames - Mocha Vinyl - 46.5"W x 28"D x 34.5"H - Two seat waiting room arm chairs are designed to coordinate and have the ability to be ganged with waiting room single seat chair, three seat chair, and bariatric arm chair. Ganging accessory and any hardware necessary to be connected by the end user without the use of tools is included. The chair frame features open arms with black urethane arm caps, glides, wall saver design, and an anti-microbial finish. Chair also has removable seat cushions, cleanout space between the back and the seat cushion, and a moisture barrier within the seat cushion. Maximum weight capacity is 350 lbs. per seat.

Don't see the finish you need? See our expanded finish options on page 45. If selecting from the expanded options page, email furniture@gsa.gov to complete your order.



WAITING ROOM SEATING

Three Seat Chair



7105-01-683-1763

Beech Wood Chair Frame - Blue Fabric, Cleer Beach - 68"W x 27"D x 34.25"H - Three seat waiting room arm chairs are designed to coordinate and have the ability to be ganged with waiting room single seat chair, two seat chair, and bariatric arm chair. Ganging accessory and any hardware necessary to be connected by the end user without the use of tools is included. The chair frame features open arms with black urethane arm caps, glides, wall saver design, and an anti-microbial finish. Chair also has removable seat cushions, cleanout space between the back and the seat cushion, and a moisture barrier within the seat cushion. Maximum weight capacity is 350 lbs. per seat.



7105-01-683-1766

Beech Wood Chair Frame - Mocha Fabric, Cleer Beach - 68"W x 27"D x 34.25"H - Three seat waiting room arm chairs are designed to coordinate and have the ability to be ganged with waiting room single seat chair, two seat chair, and bariatric arm chair. Ganging accessory and any hardware necessary to be connected by the end user without the use of tools is included. The chair frame features open arms with black urethane arm caps, glides, wall saver design, and an anti-microbial finish. Chair also has removable seat cushions, cleanout space between the back and the seat cushion, and a moisture barrier within the seat cushion. Maximum weight capacity is 350 lbs. per seat.



7105-01-683-1767

Beech Wood Chair Frame - Blue Vinyl, Cleer Beach - 68"W x 27"D x 34.25"H - Three seat waiting room arm chairs are designed to coordinate and have the ability to be ganged with waiting room single seat chair, two seat chair, and bariatric arm chair. Ganging accessory and any hardware necessary to be connected by the end user without the use of tools is included. The chair frame features open arms with black urethane arm caps, glides, wall saver design, and an anti-microbial finish. Chair also has removable seat cushions, cleanout space between the back and the seat cushion, and a moisture barrier within the seat cushion. Maximum weight capacity is 350 lbs. per seat.



7105-01-683-1770

Beech Wood Chair Frame - Mocha Vinyl, Cleer Beach - 68"W x 27"D x 34.25"H - Three seat waiting room arm chairs are designed to coordinate and have the ability to be ganged with waiting room single seat chair, two seat chair, and bariatric arm chair. Ganging accessory and any hardware necessary to be connected by the end user without the use of tools is included. The chair frame features open arms with black urethane arm caps, glides, wall saver design, and an anti-microbial finish. Chair also has removable seat cushions, cleanout space between the back and the seat cushion, and a moisture barrier within the seat cushion. Maximum weight capacity is 350 lbs. per seat.

Don't see the finish you need? See our expanded finish options on page 45. If selecting from the expanded options page, email furniture@gsa.gov to complete your order.



WAITING ROOM SEATING

Three Seat Chair



7105-01-683-1772

Silver Metallic Finish Chair Frame - Blue Fabric - 68"W x 28"D x 34.5"H - Three seat waiting room arm chairs are designed to coordinate and have the ability to be ganged with waiting room single seat chair, two seat chair, and bariatric arm chair. Ganging accessory and any hardware necessary to be connected by the end user without the use of tools is included. The chair frame features open arms with black urethane arm caps, glides, wall saver design, and an anti-microbial finish. Chair also has removable seat cushions, cleanout space between the back and the seat cushion, and a moisture barrier within the seat cushion. Maximum weight capacity is 350 lbs. per seat.



7105-01-683-1774

Silver Metallic Finish Chair Frame - Mocha Fabric - 68"W x 28"D x 34.5"H - Three seat waiting room arm chairs are designed to coordinate and have the ability to be ganged with waiting room single seat chair, two seat chair, and bariatric arm chair. Ganging accessory and any hardware necessary to be connected by the end user without the use of tools is included. The chair frame features open arms with black urethane arm caps, glides, wall saver design, and an anti-microbial finish. Chair also has removable seat cushions, cleanout space between the back and the seat cushion, and a moisture barrier within the seat cushion. Maximum weight capacity is 350 lbs. per seat.



7105-01-683-2394

Silver Metallic Finish Chair Frame - Blue Vinyl - 68"W x 28"D x 34.5"H - Three seat waiting room arm chairs are designed to coordinate and have the ability to be ganged with waiting room single seat chair, two seat chair, and bariatric arm chair. Ganging accessory and any hardware necessary to be connected by the end user without the use of tools is included. The chair frame features open arms with black urethane arm caps, glides, wall saver design, and an anti-microbial finish. Chair also has removable seat cushions, cleanout space between the back and the seat cushion, and a moisture barrier within the seat cushion. Maximum weight capacity is 350 lbs. per seat.



7105-01-683-1775

Silver Metallic Finish Chair Frame - Mocha Vinyl - 68"W x 28"D x 34.5"H - Three seat waiting room arm chairs are designed to coordinate and have the ability to be ganged with waiting room single seat chair, two seat chair, and bariatric arm chair. Ganging accessory and any hardware necessary to be connected by the end user without the use of tools is included. The chair frame features open arms with black urethane arm caps, glides, wall saver design, and an anti-microbial finish. Chair also has removable seat cushions, cleanout space between the back and the seat cushion, and a moisture barrier within the seat cushion. Maximum weight capacity is 350 lbs. per seat.

Don't see the finish you need? See our expanded finish options on page 45. If selecting from the expanded options page, email furniture@gsa.gov to complete your order.



WAITING ROOM SEATING

Bariatric Arm Chair



7105-01-683-1754

Beech Wood Chair Frame - Blue Fabric, Clear Beech - 34"W x 27"D x 34.25"D - Bariatric waiting room arm chairs are designed to coordinate and have the ability to be ganged with waiting room single seat chair, two seat chair, and three seat chair. Ganging accessory and any hardware necessary to be connected by the end user without the use of tools is included. The chair frame features open arms with black urethane arm caps, glides, wall saver design, and an anti-microbial finish. Chair also has removable seat cushions, cleanout space between the back and the seat cushion, and a moisture barrier within the seat cushion. Maximum weight capacity is 500 lbs.



7105-01-683-1755

Beech Wood Chair Frame - Mocha Fabric, Clear Beech - 34"W x 27"D x 34.25"D - Bariatric waiting room arm chairs are designed to coordinate and have the ability to be ganged with waiting room single seat chair, two seat chair, and three seat chair. Ganging accessory and any hardware necessary to be connected by the end user without the use of tools is included. The chair frame features open arms with black urethane arm caps, glides, wall saver design, and an anti-microbial finish. Chair also has removable seat cushions, cleanout space between the back and the seat cushion, and a moisture barrier within the seat cushion. Maximum weight capacity is 500 lbs.



7105-01-683-1753

Beech Wood Chair Frame - Blue Vinyl, Clear Beech - 34"W x 27"D x 34.25"D - Bariatric waiting room arm chairs are designed to coordinate and have the ability to be ganged with waiting room single seat chair, two seat chair, and three seat chair. Ganging accessory and any hardware necessary to be connected by the end user without the use of tools is included. The chair frame features open arms with black urethane arm caps, glides, wall saver design, and an anti-microbial finish. Chair also has removable seat cushions, cleanout space between the back and the seat cushion, and a moisture barrier within the seat cushion. Maximum weight capacity is 500 lbs.



7105-01-683-1756

Beech Wood Chair Frame - Mocha Vinyl, Clear Beech - 34"W x 27"D x 34.25"D - Bariatric waiting room arm chairs are designed to coordinate and have the ability to be ganged with waiting room single seat chair, two seat chair, and three seat chair. Ganging accessory and any hardware necessary to be connected by the end user without the use of tools is included. The chair frame features open arms with black urethane arm caps, glides, wall saver design, and an anti-microbial finish. Chair also has removable seat cushions, cleanout space between the back and the seat cushion, and a moisture barrier within the seat cushion. Maximum weight capacity is 500 lbs.

Don't see the finish you need? See our expanded finish options on page 45. If selecting from the expanded options page, email furniture@gsa.gov to complete your order.



WAITING ROOM SEATING

Bariatric Arm Chair



7105-01-683-1757

Silver Metallic Finish Chair Frame - Blue Fabric - 34"W x 28"D x 34.5"D - Bariatric waiting room arm chairs are designed to coordinate and have the ability to be ganged with waiting room single seat chair, two seat chair, and three seat chair. Ganging accessory and any hardware necessary to be connected by the end user without the use of tools is included. The chair frame features open arms with black urethane arm caps, glides, wall saver design, and an anti-microbial finish. Chair also has removable seat cushions, cleanout space between the back and the seat cushion, and a moisture barrier within the seat cushion. Maximum weight capacity is 500 lbs.



7105-01-683-1758

Silver Metallic Finish Chair Frame - Mocha Fabric - 34"W x 28"D x 34.5"D - Bariatric waiting room arm chairs are designed to coordinate and have the ability to be ganged with waiting room single seat chair, two seat chair, and three seat chair. Ganging accessory and any hardware necessary to be connected by the end user without the use of tools is included. The chair frame features open arms with black urethane arm caps, glides, wall saver design, and an anti-microbial finish. Chair also has removable seat cushions, cleanout space between the back and the seat cushion, and a moisture barrier within the seat cushion. Maximum weight capacity is 500 lbs.



7105-01-683-1759

Silver Metallic Finish Chair Frame - Blue Vinyl - 34"W x 28"D x 34.5"D - Bariatric waiting room arm chairs are designed to coordinate and have the ability to be ganged with waiting room single seat chair, two seat chair, and three seat chair. Ganging accessory and any hardware necessary to be connected by the end user without the use of tools is included. The chair frame features open arms with black urethane arm caps, glides, wall saver design, and an anti-microbial finish. Chair also has removable seat cushions, cleanout space between the back and the seat cushion, and a moisture barrier within the seat cushion. Maximum weight capacity is 500 lbs.



7105-01-683-1760

Silver Metallic Finish Chair Frame - Mocha Vinyl - 34"W x 28"D x 34.5"D - Bariatric waiting room arm chairs are designed to coordinate and have the ability to be ganged with waiting room single seat chair, two seat chair, and three seat chair. Ganging accessory and any hardware necessary to be connected by the end user without the use of tools is included. The chair frame features open arms with black urethane arm caps, glides, wall saver design, and an anti-microbial finish. Chair also has removable seat cushions, cleanout space between the back and the seat cushion, and a moisture barrier within the seat cushion. Maximum weight capacity is 500 lbs.

Don't see the finish you need? See our expanded finish options on page 45. If selecting from the expanded options page, email furniture@gsa.gov to complete your order.



WAITING ROOM SEATING

Hip Chair



7105-01-683-1799

Beech Wood Chair Frame - Blue Fabric, Clear Beech - 25"W x 28.25"D x 40"H - The hip chair is 23"-26" H and is from the same line as all other waiting room seating chairs. The hip chair frame has open arms with black urethane arm caps and features wall saver design, a non skid footrest, removable and field replaceable cushions, moisture barrier within seat cushion, cleanout space between back and seat cushion, and glides. Maximum weight capacity is 300 lbs.



7105-01-683-1776

Beech Wood Chair Frame - Mocha Fabric, Clear Beech - 25"W x 28.25"D x 40"H - The hip chair is 23"-26" H and is from the same line as all other waiting room seating chairs. The hip chair frame has open arms with black urethane arm caps and features wall saver design, a non skid footrest, removable and field replaceable cushions, moisture barrier within seat cushion, cleanout space between back and seat cushion, and glides. Maximum weight capacity is 300 lbs.



7105-01-683-1777

Beech Wood Chair Frame - Blue Vinyl, Clear Beech - 25"W x 28.25"D x 40"H - The hip chair is 23"-26" H and is from the same line as all other waiting room seating chairs. The hip chair frame has open arms with black urethane arm caps and features wall saver design, a non skid footrest, removable and field replaceable cushions, moisture barrier within seat cushion, cleanout space between back and seat cushion, and glides. Maximum weight capacity is 300 lbs.



7105-01-683-1778

Beech Wood Chair Frame - Mocha Vinyl, Clear Beech - 25"W x 28.25"D x 40"H - The hip chair is 23"-26" H and is from the same line as all other waiting room seating chairs. The hip chair frame has open arms with black urethane arm caps and features wall saver design, a non skid footrest, removable and field replaceable cushions, moisture barrier within seat cushion, cleanout space between back and seat cushion, and glides. Maximum weight capacity is 300 lbs.

Don't see the finish you need? See our expanded finish options on page 45. If selecting from the expanded options page, email furniture@gsa.gov to complete your order.



WAITING ROOM SEATING

Hip Chair



7105-01-683-1779

Silver Metallic Finish Chair Frame - Blue Fabric - 25"W x 30.75"D x 40.5"H - The hip chair is 23"-26" H and is from the same line as all other waiting room seating chairs. The hip chair frame has open arms with black urethane arm caps and features wall saver design, a non skid footrest, removable and field replaceable cushions, moisture barrier within seat cushion, cleanout space between back and seat cushion, and glides. Maximum weight capacity is 300 lbs.



7105-01-683-1780

Silver Metallic Finish Chair Frame - Mocha Fabric - 25"W x 30.75"D x 40.5"H - The hip chair is 23"-26" H and is from the same line as all other waiting room seating chairs. The hip chair frame has open arms with black urethane arm caps and features wall saver design, a non skid footrest, removable and field replaceable cushions, moisture barrier within seat cushion, cleanout space between back and seat cushion, and glides. Maximum weight capacity is 300 lbs.



7105-01-683-1781

Silver Metallic Finish Chair Frame - Blue Vinyl - 25"W x 30.75"D x 40.5"H - The hip chair is 23"-26" H and is from the same line as all other waiting room seating chairs. The hip chair frame has open arms with black urethane arm caps and features wall saver design, a non skid footrest, removable and field replaceable cushions, moisture barrier within seat cushion, cleanout space between back and seat cushion, and glides. Maximum weight capacity is 300 lbs.



7105-01-683-1782

Silver Metallic Finish Chair Frame - Mocha Vinyl - 25"W x 30.75"D x 40.5"H - The hip chair is 23"-26" H and is from the same line as all other waiting room seating chairs. The hip chair frame has open arms with black urethane arm caps and features wall saver design, a non skid footrest, removable and field replaceable cushions, moisture barrier within seat cushion, cleanout space between back and seat cushion, and glides. Maximum weight capacity is 300 lbs.

Don't see the finish you need? See our expanded finish options on page 45. If selecting from the expanded options page, email furniture@gsa.gov to complete your order.



WAITING ROOM SEATING

Free Standing End Table



7105-01-683-0468

Freestanding end table - Wood Table Base - Light Maple Wood Finish - 22"W x 22"D x 16"H - Freestanding end tables feature square laminate tops and glides on the table legs.



7105-01-683-0472

Freestanding end table - Wood Table Base - Platinum Gray Finish - 22"W x 22"D x 16"H - Freestanding end tables feature square laminate tops and glides on the table legs.



7105-01-683-0473

Freestanding end table - Silver Metallic Finish Table Base - Light Maple Wood Finish - 22"W x 22"D x 16"H - Freestanding end tables feature square laminate tops and glides on the table legs.



7105-01-683-0449

Freestanding end table - Silver Metallic Finish Table Base - Platinum Gray Finish - 22"W x 22"D x 16"H - Freestanding end tables feature square laminate tops and glides on the table legs.



WAITING ROOM SEATING

Attached End Table



7105-01-683-0451

Attached end table - Wood Table Base - Light Maple Wood Finish - 22"W x 22"D x 16"H - Attached end tables are non-handed and attach to waiting room single seat, two seat, three seat and bariatric chairs. Attachment hardware is included. Tables feature laminate tops and glides on table legs.



7105-01-683-2157

Attached end table - Wood Table Base - Platinum Gray Finish - 22"W x 22"D x 16"H - Attached end tables are non-handed and attach to waiting room single seat, two seat, three seat and bariatric chairs. Attachment hardware is included. Tables feature laminate tops and glides on table legs.



7105-01-683-0450

Attached end table - Silver Metallic Finish Table Base - Light Maple Wood Finish - 22"W x 22"D x 16"H - Attached end tables are non-handed and attach to waiting room single seat, two seat, three seat and bariatric chairs. Attachment hardware is included. Tables feature laminate tops and glides on table legs.



7105-01-683-0452

Attached end table - Silver Metallic Finish Table Base - Platinum Gray Finish - 22"W x 22"D x 16"H - Attached end tables are non-handed and attach to waiting room single seat, two seat, three seat and bariatric chairs. Attachment hardware is included. Tables feature laminate tops and glides on table legs.



WAITING ROOM SEATING

Attached Connecting Table



7105-01-683-0454

Attached connecting laminate top table - Light Maple Wood Finish - 22"W x 22"D - Attached connecting laminate top table is non-handed. This table does not have legs as it is intended to attach between waiting room single, two seat, three seat or bariatric chairs. Attachment hardware is include.



7105-01-683-0456

Attached connecting laminate top table - Platinum Gray Finish - 22"W x 22"D - Attached connecting laminate top table is non-handed. This table does not have legs as it is intended to attach between waiting room single, two seat, three seat or bariatric chairs. Attachment hardware is include.



WAITING ROOM SEATING

Coffee Table



7105-01-683-0458

Rectangular coffee table - Wood Table Base - Light Maple Wood Finish - Rectangular coffee table features laminate top and glides on table legs - 42"W x 22"D x 16"H



7105-01-683-0459

Rectangular coffee table - Wood Table Base - Platinum Gray Finish - Rectangular coffee table features laminate top and glides on table legs - 42"W x 22"D x 16"H



7105-01-683-0463

Rectangular coffee table - Silver Metallic Finish Table Base - Light Maple Wood Finish - Rectangular coffee table features laminate top and glides on table legs - 42"W x 22"D x 16"H



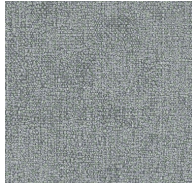
7105-01-683-0464

Rectangular coffee table - Silver Metallic Finish Table Base - Platinum Gray Finish - Rectangular coffee table features laminate top and glides on table legs - 42"W x 22"D x 16"H

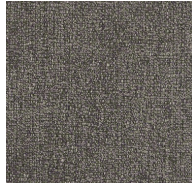


EXPANDED COLOR OPTIONS

Solid Fabrics



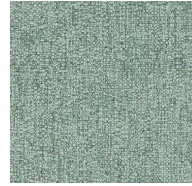
CF Stinson
Shimmy
London 65179



CF Stinson
Shimmy
Palladium 65183



CF Stinson
Shimmy
Savannah 65180

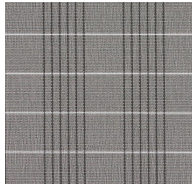


CF Stinson
Shimmy
Tidepool 65182

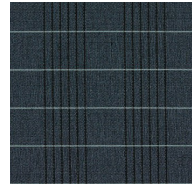
Patterned Fabrics



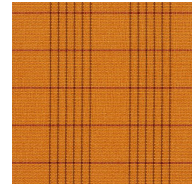
Designtex
Windowpane Crypton
Char 3861-802



Designtex
Windowpane Crypton
Grey 3861-801



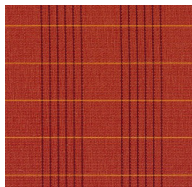
Designtex
Windowpane Crypton
Ink Blue 3861-405



Designtex
Windowpane Crypton
Marigold 3861-701



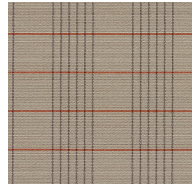
Designtex
Windowpane Crypton
Parakeet 3861-502



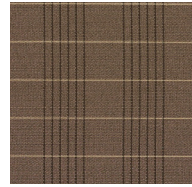
Designtex
Windowpane Crypton
Persimmon 3861-702



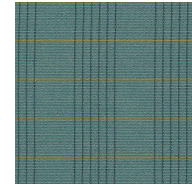
Designtex
Windowpane Crypton
Royal 3861-402



Designtex
Windowpane Crypton
Sand 3861-102



Designtex
Windowpane Crypton
Tan 3861-103



Designtex
Windowpane Crypton
Turquoise 3861-403



Momentum
Amuse
Admiral



Momentum
Amuse
Alloy



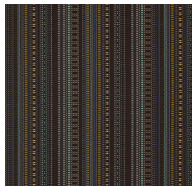
Momentum
Amuse
Mocha



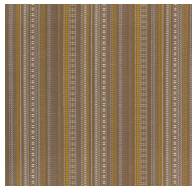
Momentum
Amuse
Poppy



Momentum
Amuse
Quartz



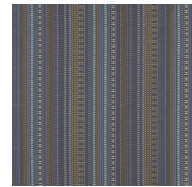
Momentum
Beep
Bridge



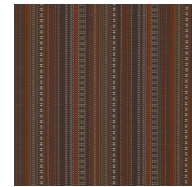
Momentum
Beep
Flax



Momentum
Beep
Furnace



Momentum
Beep
Pontoon

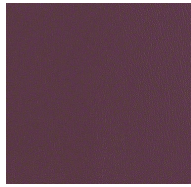


Momentum
Beep
Steel



EXPANDED COLOR OPTIONS

Solid Vinyls



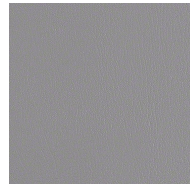
CF Stinson
Core
Black Plum CRE62



CF Stinson
Core
Blueberry CRE61



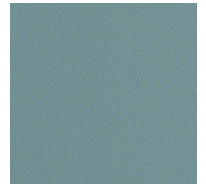
CF Stinson
Core
Bucksuede CRE55



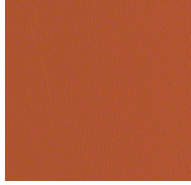
CF Stinson
Core
Cadet CRE13



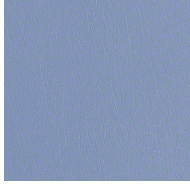
CF Stinson
Core
Camel Back CRE44



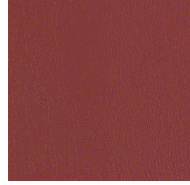
CF Stinson
Core
Horizon Blue CRE20



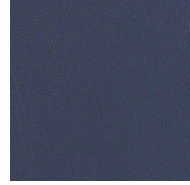
CF Stinson
Core
Manzanita CRE58



CF Stinson
Core
Neptune CRE16



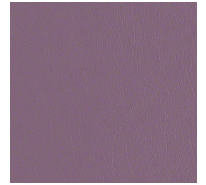
CF Stinson
Core
New Burgundy CRE68



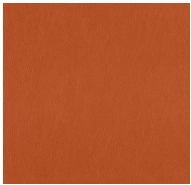
CF Stinson
Core
Royal Blue CRE40



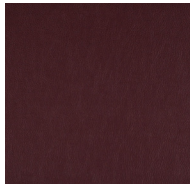
CF Stinson
Core
Vizcaya Palm CRE29



CF Stinson
Core
Wood Violet CRE46



Maharam
Lariat
Auburn 031



Maharam
Lariat
Brick Red 003



Maharam
Lariat
Macaw 034



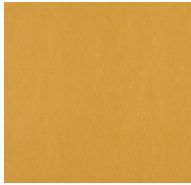
Maharam
Lariat
Navy 021



Maharam
Lariat
Pebble 016



Maharam
Lariat
Plum 032

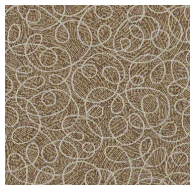


Maharam
Lariat
Tamarind 028

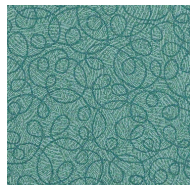
Patterned Vinyls



CF Stinson
Tendril
Denim TNR213



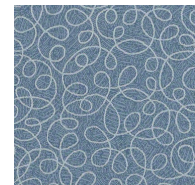
CF Stinson
Tendril
River Rock TNR206



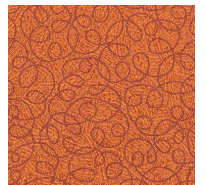
CF Stinson
Tendril
Splash TNR205



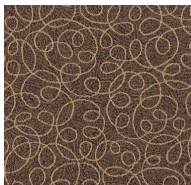
CF Stinson
Tendril
Sprout TNR208



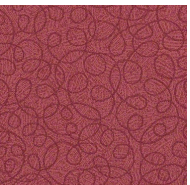
CF Stinson
Tendril
Stellar TNR200



CF Stinson
Tendril
Sundown TNR203



CF Stinson
Tendril
Teak TNR215



CF Stinson
Tendril
Wild Berry TNR210

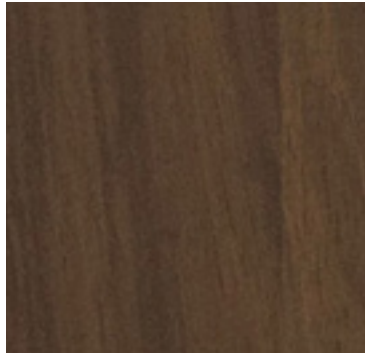


EXPANDED LAMINATE AND COORDINATING THERMOFORMED VINYL OPTIONS

The following laminates and coordinating thermoform vinyls are available for bedside cabinets, dressers, wardrobe towers, and overbed tables.



Copper



Park Avenue



Nutmeg



Pricing

Prices below are FOB Destination (inclusive of shipping). Prices are subject to change.
The best source for current pricing is www.GSAGlobalsupply.gsa.gov.

PATIENT ROOM FURNITURE

7110-01-683-0851	Exam Stool		EA	\$276.78
------------------	------------	--	----	----------

Bedside Cabinets

7105-01-682-9725	Three Drawer with Gallery Rail	Light Maple Wood Finish	EA	\$709.08
7105-01-682-9728	Three Drawer with Gallery Rail	Platinum Gray Finish	EA	\$709.08
7105-01-652-8445	Three Drawer with Spill Groove	Light Maple Wood Finish	EA	\$649.32
7105-01-682-9729	Three Drawer with Spill Groove	Platinum Gray Finish	EA	\$649.32
7105-01-682-9730	Single Drawer, Left Door, Gallery Rail	Light Maple Wood Finish	EA	\$557.85
7105-01-682-9731	Single Drawer, Left Door, Gallery Rail	Platinum Gray Finish	EA	\$557.85
7105-01-683-0156	Single Drawer, Right Door, Gallery Rail	Light Maple Wood Finish	EA	\$557.85
7105-01-683-0157	Single Drawer, Right Door, Gallery Rail	Platinum Gray Finish	EA	\$557.85
7105-01-683-0163	Single Drawer, Left Door, Spill Groove	Light Maple Wood Finish	EA	\$498.10
7105-01-683-0154	Single Drawer, Left Door, Spill Groove	Platinum Gray Finish	EA	\$498.10
7105-01-683-0159	Single Drawer, Right Door, Spill Groove	Light Maple Wood Finish	EA	\$498.10
7105-01-683-0160	Single Drawer, Right Door, Spill Groove	Platinum Gray Finish	EA	\$498.10

Dressers

7105-01-683-0855	Three Drawer Dresser	Light Maple Wood Finish	EA	\$841.80
7105-01-683-0856	Three Drawer Dresser	Platinum Gray Finish	EA	\$841.80

Wardrobe Towers

7105-01-683-0860	Right Door	Light Maple Wood Finish	EA	\$897.85
7105-01-683-1403	Right Door	Platinum Gray Finish	EA	\$897.85
7105-01-683-1405	Left Door	Light Maple Wood Finish	EA	\$897.85
7105-01-683-0863	Left Door	Platinum Gray Finish	EA	\$897.85
7105-01-683-0868	Double Door	Light Maple Wood Finish	EA	\$1,104.60
7105-01-683-1406	Double Door	Platinum Gray Finish	EA	\$1,104.60

Overbed Tables

7105-01-652-8444	Rectangular Shaped Top	Light Maple Wood Finish	EA	\$531.94
7105-01-683-0149	Rectangular Shaped Top	Platinum Gray Finish	EA	\$531.94
7105-01-683-0151	Kidney Shaped Top	Light Maple Wood Finish	EA	\$531.94
7105-01-683-0152	Kidney Shaped Top	Platinum Gray Finish	EA	\$531.94



High Back Patient Chairs

7105-01-683-1762	Wood Frame, Clear Beech Finish	Blue Fabric	EA	\$965.43
7105-01-683-1764	Wood Frame, Clear Beech Finish	Mocha Fabric	EA	\$965.43
7105-01-683-1765	Wood Frame, Clear Beech Finish	Blue Vinyl	EA	\$818.96
7105-01-683-1768	Wood Frame, Clear Beech Finish	Mocha Vinyl	EA	\$818.96
7105-01-683-1769	Metal Frame, Silver Metallic Finish	Blue Fabric	EA	\$721.72
7105-01-683-1771	Metal Frame, Silver Metallic Finish	Mocha Fabric	EA	\$721.72
7105-01-683-1773	Metal Frame, Silver Metallic Finish	Blue Vinyl	EA	\$636.05
7105-01-683-1789	Metal Frame, Silver Metallic Finish	Mocha Vinyl	EA	\$636.05

Single Seat Sleepers

7105-01-683-0871	Stationary sleeper with glides	Blue Fabric	EA	\$2,395.85
7105-01-683-0875	Stationary sleeper with glides	Mocha Fabric	EA	\$2,395.85
7105-01-683-0854	Stationary sleeper with glides	Blue Vinyl	EA	\$2,159.47
7105-01-683-0852	Stationary sleeper with glides	Mocha Vinyl	EA	\$2,159.47
7105-01-683-0853	Mobile sleeper with locking casters	Blue Fabric	EA	\$2,423.35
7105-01-683-0857	Mobile sleeper with locking casters	Mocha Fabric	EA	\$2,423.35
7105-01-683-0858	Mobile sleeper with locking casters	Blue Vinyl	EA	\$2,185.40
7105-01-683-0859	Mobile sleeper with locking casters	Mocha Vinyl	EA	\$2,185.40

Two Seat Sleepers

7105-01-683-0460	Stationary sleeper with glides	Blue Fabric	EA	\$2,955.82
7105-01-683-0462	Stationary sleeper with glides	Mocha Fabric	EA	\$2,955.82
7105-01-683-0465	Stationary sleeper with glides	Blue Vinyl	EA	\$2,664.47
7105-01-683-0466	Stationary sleeper with glides	Mocha Vinyl	EA	\$2,664.47
7105-01-683-0469	Mobile sleeper with locking casters	Blue Fabric	EA	\$2,983.32
7105-01-683-0861	Mobile sleeper with locking casters	Mocha Fabric	EA	\$2,983.32
7105-01-683-0864	Mobile sleeper with locking casters	Blue Vinyl	EA	\$2,690.91
7105-01-683-0867	Mobile sleeper with locking casters	Mocha Vinyl	EA	\$2,690.91

Three Seat Sleepers

7105-01-683-0879	Stationary sleeper with glides	Blue Fabric	EA	\$2,979.04
7105-01-683-0878	Stationary sleeper with glides	Mocha Fabric	EA	\$2,979.04
7105-01-683-0877	Stationary sleeper with glides	Blue Vinyl	EA	\$2,609.96
7105-01-683-0862	Stationary sleeper with glides	Mocha Vinyl	EA	\$2,609.96
7105-01-683-0870	Mobile sleeper with locking casters	Blue Fabric	EA	\$2,979.04
7105-01-683-0872	Mobile sleeper with locking casters	Mocha Fabric	EA	\$2,979.04
7105-01-683-0873	Mobile sleeper with locking casters	Blue Vinyl	EA	\$2,609.96
7105-01-683-0874	Mobile sleeper with locking casters	Mocha Vinyl	EA	\$2,609.96



Patient Recliners

7105-01-683-2155	Stationary Recliner, Right Flip Down Arm	Blue Fabric	EA	\$3,059.46
7105-01-683-2392	Stationary Recliner, Right Flip Down Arm	Mocha Fabric	EA	\$3,059.46
7105-01-683-2393	Stationary Recliner, Right Flip Down Arm	Blue Vinyl	EA	\$2,888.67
7105-01-683-2395	Stationary Recliner, Right Flip Down Arm	Mocha Vinyl	EA	\$2,888.67
7105-01-683-2397	Stationary Recliner, Left Flip Down Arm	Blue Fabric	EA	\$3,059.46
7105-01-683-2398	Stationary Recliner, Left Flip Down Arm	Mocha Fabric	EA	\$3,059.46
7105-01-683-2399	Stationary Recliner, Left Flip Down Arm	Blue Vinyl	EA	\$2,888.67
7105-01-683-2401	Stationary Recliner, Left Flip Down Arm	Mocha Vinyl	EA	\$2,888.67
7105-01-683-2402	Mobile Recliner, Right Flip Down Arm	Blue Fabric	EA	\$3,487.77
7105-01-683-2403	Mobile Recliner, Right Flip Down Arm	Mocha Fabric	EA	\$3,487.77
7105-01-683-2388	Mobile Recliner, Right Flip Down Arm	Blue Vinyl	EA	\$3,317.51
7105-01-683-2387	Mobile Recliner, Right Flip Down Arm	Mocha Vinyl	EA	\$3,317.51
7105-01-683-2385	Mobile Recliner, Left Flip Down Arm	Blue Fabric	EA	\$3,487.77
7105-01-683-2384	Mobile Recliner, Left Flip Down Arm	Mocha Fabric	EA	\$3,487.77
7105-01-683-2389	Mobile Recliner, Left Flip Down Arm	Blue Vinyl	EA	\$3,317.51
7105-01-683-2390	Mobile Recliner, Left Flip Down Arm	Mocha Vinyl	EA	\$3,317.51

Trendelenburg Recliners

7105-01-683-3018	Stationary, Right Flip Down Arm	Blue Fabric	EA	\$3,077.98
7105-01-683-3019	Stationary, Right Flip Down Arm	Mocha Fabric	EA	\$3,077.98
7105-01-683-3022	Stationary, Right Flip Down Arm	Blue Vinyl	EA	\$2,907.71
7105-01-683-3025	Stationary, Right Flip Down Arm	Mocha Vinyl	EA	\$2,907.71
7105-01-683-3017	Stationary, Left Flip Down Arm	Blue Fabric	EA	\$3,077.98
7105-01-683-3021	Stationary, Left Flip Down Arm	Mocha Fabric	EA	\$3,077.98
7105-01-683-0162	Stationary, Left Flip Down Arm	Blue Vinyl	EA	\$2,907.71
7105-01-683-0136	Stationary, Left Flip Down Arm	Mocha Vinyl	EA	\$2,907.71
7105-01-683-0137	Mobile, Right Flip Down Arm	Blue Fabric	EA	\$3,506.27
7105-01-683-0138	Mobile, Right Flip Down Arm	Mocha Fabric	EA	\$3,506.27
7105-01-683-0139	Mobile, Right Flip Down Arm	Blue Vinyl	EA	\$3,336.01
7105-01-683-0140	Mobile, Right Flip Down Arm	Mocha Vinyl	EA	\$3,336.01
7105-01-683-0142	Mobile, Left Flip Down Arm	Blue Fabric	EA	\$3,506.27
7105-01-683-0143	Mobile, Left Flip Down Arm	Mocha Fabric	EA	\$3,506.27
7105-01-683-3770	Mobile, Left Flip Down Arm	Blue Vinyl	EA	\$3,336.01
7105-01-683-3023	Mobile, Left Flip Down Arm	Mocha Vinyl	EA	\$3,336.01

Gliders

7105-01-682-9889		Blue Fabric	EA	\$1,218.34
7105-01-683-0145		Mocha Fabric	EA	\$1,218.34
7105-01-683-0146		Blue Vinyl	EA	\$1,111.00
7105-01-683-0147		Mocha Vinyl	EA	\$1,111.00



WAITING ROOM FURNITURE

Single Seat Arm Chairs

7105-01-683-1792	Wood Frame, Clear Beech Finish	Blue Fabric	EA	\$671.06
7105-01-683-1793	Wood Frame, Clear Beech Finish	Mocha Fabric	EA	\$671.06
7105-01-683-1794	Wood Frame, Clear Beech Finish	Blue Vinyl	EA	\$585.93
7105-01-683-1795	Wood Frame, Clear Beech Finish	Mocha Vinyl	EA	\$585.93
7105-01-683-1796	Metal Frame, Silver Metallic Finish	Blue Fabric	EA	\$564.25
7105-01-683-1797	Metal Frame, Silver Metallic Finish	Mocha Fabric	EA	\$564.25
7105-01-683-1798	Metal Frame, Silver Metallic Finish	Blue Vinyl	EA	\$499.20
7105-01-683-1800	Metal Frame, Silver Metallic Finish	Mocha Vinyl	EA	\$499.20

Two Seat Chairs

7105-01-683-1783	Wood Frame, Clear Beech Finish	Blue Fabric	EA	\$1,129.55
7105-01-683-1784	Wood Frame, Clear Beech Finish	Mocha Fabric	EA	\$1,129.55
7105-01-683-1785	Wood Frame, Clear Beech Finish	Blue Vinyl	EA	\$976.21
7105-01-683-1786	Wood Frame, Clear Beech Finish	Mocha Vinyl	EA	\$976.21
7105-01-683-1787	Metal Frame, Silver Metallic Finish	Blue Fabric	EA	\$1,023.53
7105-01-683-1788	Metal Frame, Silver Metallic Finish	Mocha Fabric	EA	\$1,023.53
7105-01-683-1790	Metal Frame, Silver Metallic Finish	Blue Vinyl	EA	\$893.99
7105-01-683-1791	Metal Frame, Silver Metallic Finish	Mocha Vinyl	EA	\$893.99

Three Seat Chairs

7105-01-683-1763	Wood Frame, Clear Beech Finish	Blue Fabric	EA	\$1,628.77
7105-01-683-1766	Wood Frame, Clear Beech Finish	Mocha Fabric	EA	\$1,628.77
7105-01-683-1767	Wood Frame, Clear Beech Finish	Blue Vinyl	EA	\$1,400.34
7105-01-683-1770	Wood Frame, Clear Beech Finish	Mocha Vinyl	EA	\$1,400.34
7105-01-683-1772	Metal Frame, Silver Metallic Finish	Blue Fabric	EA	\$1,462.00
7105-01-683-1774	Metal Frame, Silver Metallic Finish	Mocha Fabric	EA	\$1,462.00
7105-01-683-2394	Metal Frame, Silver Metallic Finish	Blue Vinyl	EA	\$1,267.93
7105-01-683-1775	Metal Frame, Silver Metallic Finish	Mocha Vinyl	EA	\$1,267.93

Bariatric Arm Chairs

7105-01-683-1754	Wood Frame, Clear Beech Finish	Blue Fabric	EA	\$918.00
7105-01-683-1755	Wood Frame, Clear Beech Finish	Mocha Fabric	EA	\$918.00
7105-01-683-1753	Wood Frame, Clear Beech Finish	Blue Vinyl	EA	\$770.99
7105-01-683-1756	Wood Frame, Clear Beech Finish	Mocha Vinyl	EA	\$770.99
7105-01-683-1757	Metal Frame, Silver Metallic Finish	Blue Fabric	EA	\$702.79
7105-01-683-1758	Metal Frame, Silver Metallic Finish	Mocha Fabric	EA	\$702.79
7105-01-683-1759	Metal Frame, Silver Metallic Finish	Blue Vinyl	EA	\$601.80
7105-01-683-1760	Metal Frame, Silver Metallic Finish	Mocha Vinyl	EA	\$601.80



Hip Chairs

7105-01-683-1799	Wood Frame, Clear Beech Finish	Blue Fabric	EA	\$832.34
7105-01-683-1776	Wood Frame, Clear Beech Finish	Mocha Fabric	EA	\$832.34
7105-01-683-1777	Wood Frame, Clear Beech Finish	Blue Vinyl	EA	\$772.58
7105-01-683-1778	Wood Frame, Clear Beech Finish	Mocha Vinyl	EA	\$772.58
7105-01-683-1779	Metal Frame, Silver Metallic Finish	Blue Fabric	EA	\$757.78
7105-01-683-1780	Metal Frame, Silver Metallic Finish	Mocha Fabric	EA	\$757.78
7105-01-683-1781	Metal Frame, Silver Metallic Finish	Blue Vinyl	EA	\$690.62
7105-01-683-1782	Metal Frame, Silver Metallic Finish	Mocha Vinyl	EA	\$690.62

Waiting Room Tables

Freestanding End Tables

7105-01-683-0468	Beech Wood Table Base	Light Maple Wood Finish Top	EA	\$377.55
7105-01-683-0472	Beech Wood Table Base	Platinum Gray Finish Top	EA	\$377.55
7105-01-683-0473	Silver Metallic Finish Table Base	Light Maple Wood Finish Top	EA	\$222.09
7105-01-683-0449	Silver Metallic Finish Table Base	Platinum Gray Finish Top	EA	\$222.09

Attached End Tables

7105-01-683-0451	Beech Wood Table Base	Light Maple Wood Finish Top	EA	\$301.40
7105-01-683-2157	Beech Wood Table Base	Platinum Gray Finish Top	EA	\$301.40
7105-01-683-0450	Silver Metallic Finish Table Base	Light Maple Wood Finish Top	EA	\$255.39
7105-01-683-0452	Silver Metallic Finish Table Base	Platinum Gray Finish Top	EA	\$255.39

Attached Connecting Tables

7105-01-683-0454		Light Maple Wood Finish	EA	\$216.80
7105-01-683-0456		Platinum Gray Finish	EA	\$216.80

Coffee Tables

7105-01-683-0458	Beech Wood Table Base	Light Maple Wood Finish Top	EA	\$488.59
7105-01-683-0459	Beech Wood Table Base	Platinum Gray Finish Top	EA	\$488.59
7105-01-683-0463	Silver Metallic Finish Table Base	Light Maple Wood Finish Top	EA	\$305.62
7105-01-683-0464	Silver Metallic Finish Table Base	Platinum Gray Finish Top	EA	\$305.62



ORDER INFORMATION

GSA Global Supply accepts your government purchase card or direct billing through your Activity Address Code (AAC) or DoDAAC. For information on obtaining an AAC or DoDAAC, contact our Order Management Office at (800) 927-7622 or ordermgmt@gsa.gov.

Online: www.GSAGlobalsupply.gsa.gov

Available 24/7, the GSA Global Supply website gives you access to hundreds of thousands of tools, office supplies, computer products, furniture and other items.

Telephone:

(800) 525-8027 | DSN 465-1416 Available 7:30 a.m. to 8 p.m. (ET), Monday through Friday.

Fax Orders:

(800) 856-7057 Available 24/7. You will receive order confirmation via fax.

FEDSTRIP/MILSTRIP:

We're integrated with orders routed from DLA Transaction Services. We're also happy to accept your Standard Form 344 or DD Form 1348 by mail at: GSA Global Supply (QSDLBB) 819 Taylor St., Room 6A00 Fort Worth, TX 76102

Please ensure that a contact person and a commercial telephone number accompany all orders to expedite any necessary clarification. The office cannot return DSN or Autovon calls. For FEDSTRIP/MILSTRIP orders, please enter the name and phone number in the "Mark For" section of your requisition.

Please be sure to include a supplemental address if the signal code (Block 51 of Standard Form 344) is anything other than "A". Please also verify that your supplemental address is accurate and includes a telephone number and/or point of contact if possible.

Additional Ordering Options:

GSAAdvantage!®: www.gsaadvantage.gov Available 24 hours a day, seven days a week. The same user ID and password can be used on both the GSA Global Supply website and GSAAdvantage! The contractor field will indicate "GSA Global Supply."

DOD EMALL:

Available 24/7. All GSA Global Supply items appear on the Defense Logistics Agency's DOD EMALL site. Customer must use their DoDAAC to purchase GSA items. The supplier field will indicate "GSA MILSTRIP" if the product is offered by GSA Global Supply.

Contract Prices:

Please refer to www.globalsupply.gsa.gov for the most current pricing.

Delivery Conditions:

Delivery to a location with a loading dock.

Installation:

Installation available for CONUS only. The product ships to a location that has a loading dock. Customers may arrange for inside delivery or additional services when they need freight delivered beyond their loading docks, at an extra cost. To request special handling, please contact the GSA National Customer Service Center (NCSC) at 800-488-3111 or NCSCcustomer.service@gsa.gov



Warranty:

Krug warrants the construction and the finish for all our products to be free from defect in materials and workmanship for a period of 10 years from the date of purchase. This warranty does not apply to components not manufactured by Krug including textiles, which are subject to the specific warranties of those manufacturers, if any. Textiles (fabric, leather, vinyl, or any other covering material) suppliers do not guarantee their products for durability and color fastness, and not does Krug. Casters, mechanical and electrical components have a warranty of five years from the date of purchase. The Krug warranty does not apply to COM specified materials; damage caused by a carrier other than Krug, or variation in wood finishes due to natural wood color variations. Krug cannot be held responsible for variations in fabric dye lots from order to order. All fabric is carefully inspected when it is received, but a degree of variation in color should be expected. Repair or replacement of any defect covered by Krug warranty will be made at no charge to the original purchaser during the warranty period. This warranty does not apply to defects resulting from negligence, misuse, alteration, improper cleaning, stains or accidents. Krug's judgement will be final in all matters concerning the condition of the defect, and the necessity or manner of repair. Krug is not responsible for the damage or degradation of product that may occur due to extreme hot or cold temperatures after is has left Krug. Krug product should not be exposed to any extreme hot or cold temperatures during its life. All products should be stored in climate-controlled warehousing and should be transported on climate-controlled trailers and containers, in order to protect its integrity. Trailers and containers should not be used for storage of products. Products should remain in a climate-controlled environment until the time that transport commences, and should be moved into a climate-controlled environment as soon as transport is complete. Exposure to extreme heat or cold temperature voids the Krug warranty. This warranty applies to products sold in North America only, and in made by Krug only to the original purchasers acquiring our products through authorized Krug dealers, directly from Krug, or from others specifically authorized to sell our products.

Resolution of Problems with Orders:

The GSA National Customer Service Center (NCSC) is the point to which all discrepancy reports (as well as quality deficiency reports) should be addressed for processing: GSA National Customer Service Center, 800-488-3111 or NCSCcustomer.service@gsa.gov

